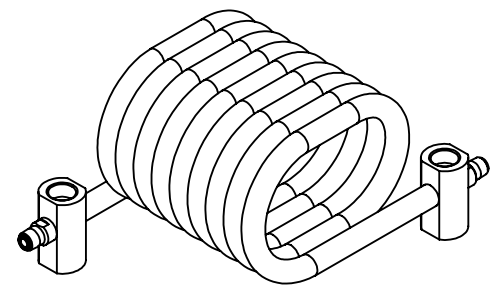
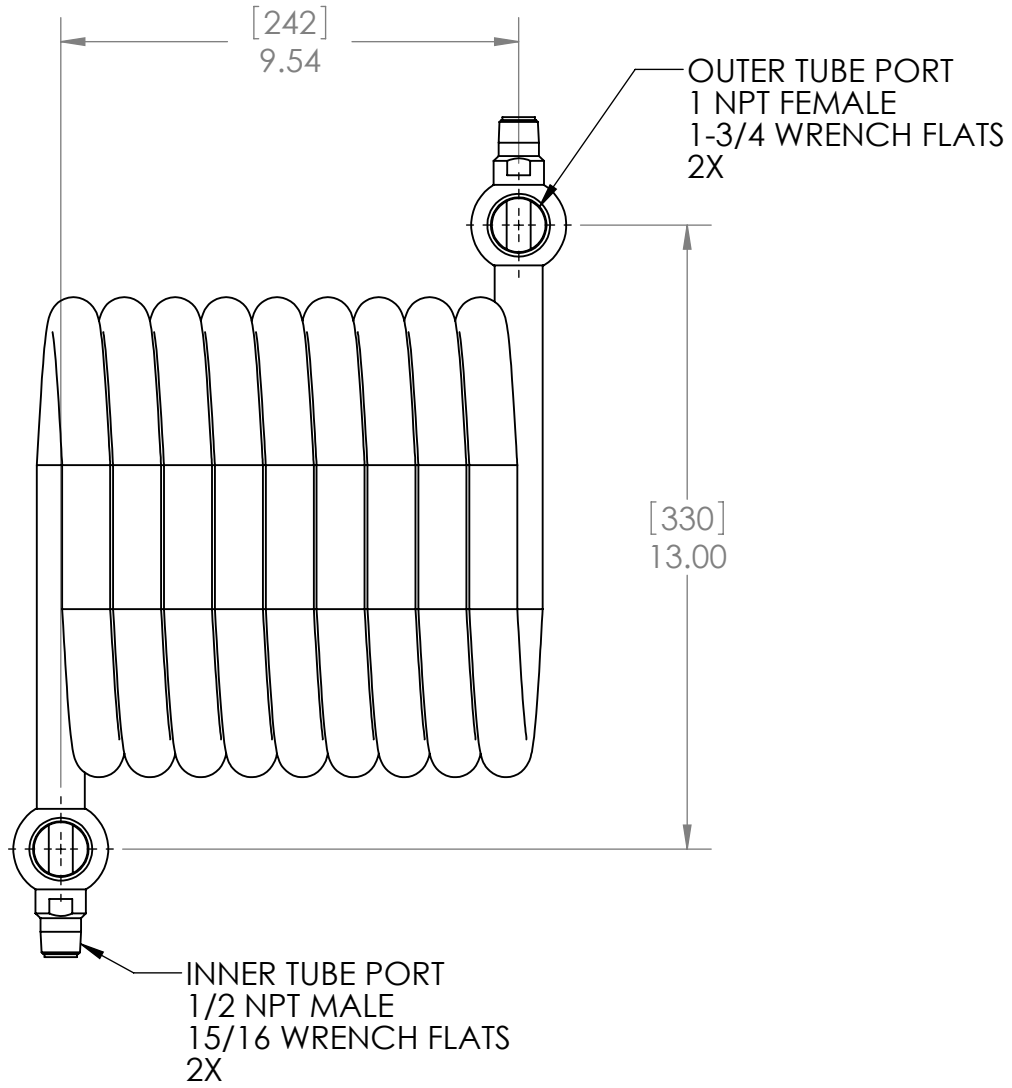
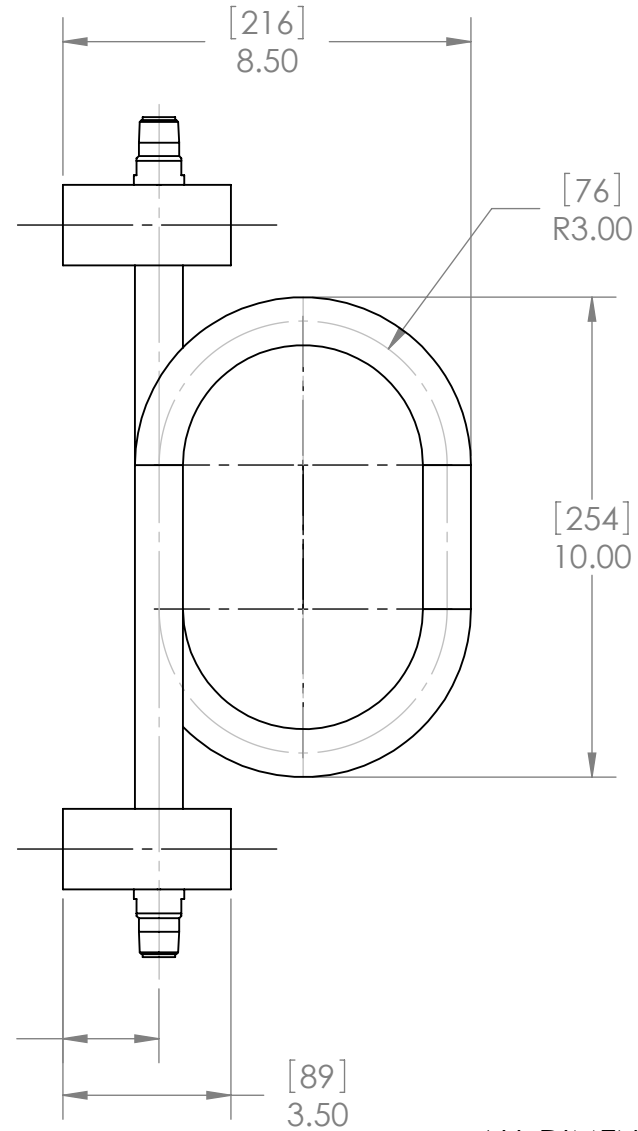
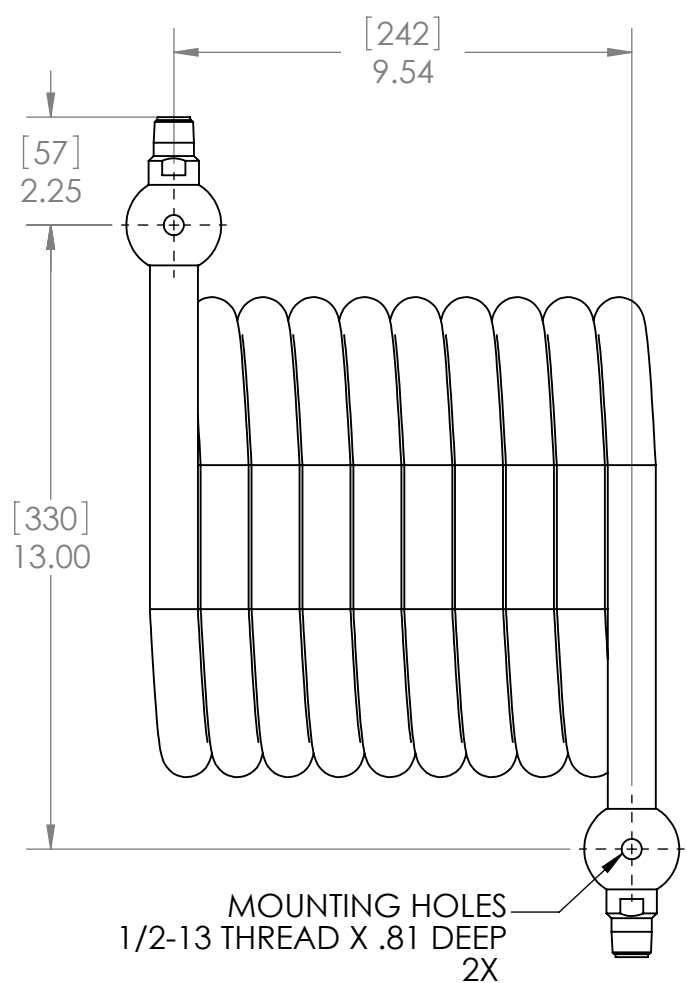


- NOTES:
1. MATERIAL: 316L STAINLESS STEEL.
- INNER TUBE: .50 OD X .065 WALL.
  - OUTER TUBE: 1.00 OD X .065 WALL.

DESIGN DATA	
INNER TUBE SIDE PRESSURE	4350PSI @ 200F 3200PSI @ 800F
OUTER TUBE SIDE PRESSURE	2000 PSI @ 200F 1000 PSI @ 800F
INNER TUBE SIDE HYDROTEST PRESSURE	6525 PSI
OUTER TUBE SIDE HYDROTEST PRESSURE	3000 PSI
CORROSION ALLOWANCE	NONE
RADIOGRAPHY	NONE
MDMT	-155F

# OF COIL	WEIGHT EMPTY		TRANSFER AREA	
	lb	kg	ft²	m²
9	23.73	10.8	2.5	.23



ALL DIMENSIONS ARE IN INCHES [mm]

**PROPRIETARY AND CONFIDENTIAL**  
THE INFORMATION CONTAINED IN THIS DOCUMENT IS THE SOLE PROPERTY OF EXERGY, LLC. ANY REPRODUCTION, DISCLOSURE, OR USE, IN PART OR AS A WHOLE, WITHOUT THE WRITTEN PERMISSION OF EXERGY, LLC IS PROHIBITED.

PRODUCT SPECIFICATIONS SUBJECT TO CHANGE WITHOUT NOTICE. MANUFACTURER ASSUMES NO LIABILITY FOR MISUSE OR ABUSE OF PRODUCT. SPECIFIC WARRANTY INFORMATION IS AVAILABLE UPON REQUEST.

**THIRD ANGLE PROJECTION**

HEAT TRANSFER SOLUTIONS

320 ENDO BLVD.  
GARDEN CITY, NY 11530  
USA (516)832-9300  
www.exergyllc.com

**TUBE IN TUBE HEAT EXCHANGER**  
**1 OUTER TUBE X 1/2 INNER TUBE**  
**NPT, ALL PORTS**

MODEL NO. **AS-00528**

DATE 1/22/2019	SCALE 1:4	SHEET 1 OF 1
----------------	-----------	--------------

MODEL NO.  
**AS-00528**