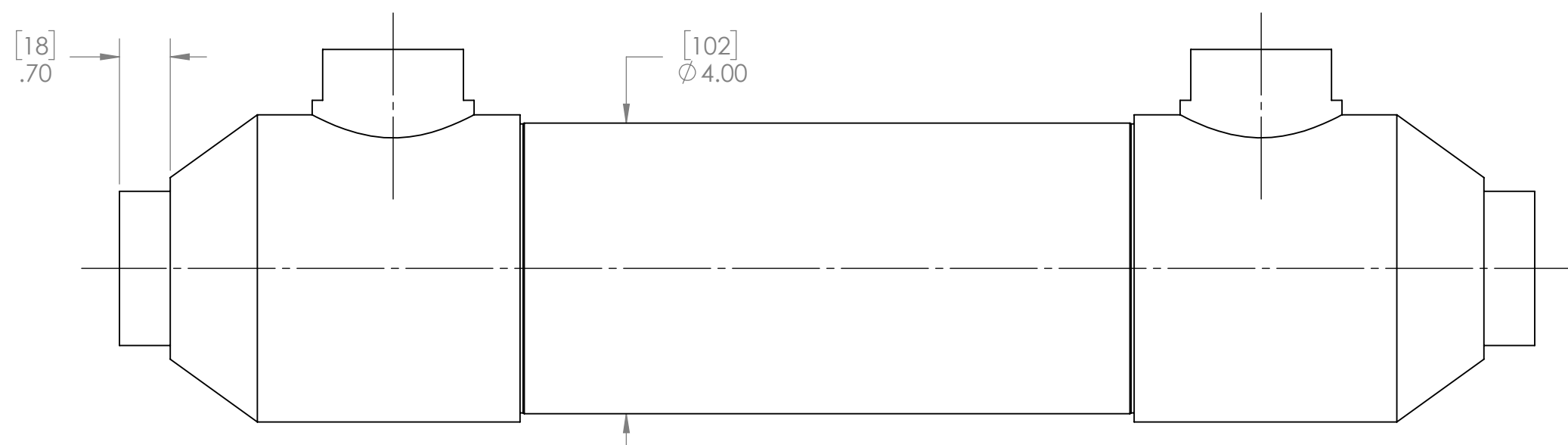


1. MATERIAL: 316L STAINLESS STEEL, NICKEL BRAZED.
2. ALL EXTERNAL SURFACES SATIN FINISH.
3. MAXIMUM OPERATING CONDITIONS:
 - PRESSURE: TUBESIDE - 700 psi (48 bar)
SHELLSIDE - 375 psi (26 bar)
 - TEMPERATURE: 800°F (425°C)
 - PRESSURE FOR STEAM SERVICE: 125 psi (8.6 bar)
 - FLUID TEMPERATURE DIFFERENCE:
(T_{HOT})_{AVE} - (T_{COLD})_{AVE} <125°F (70°C)



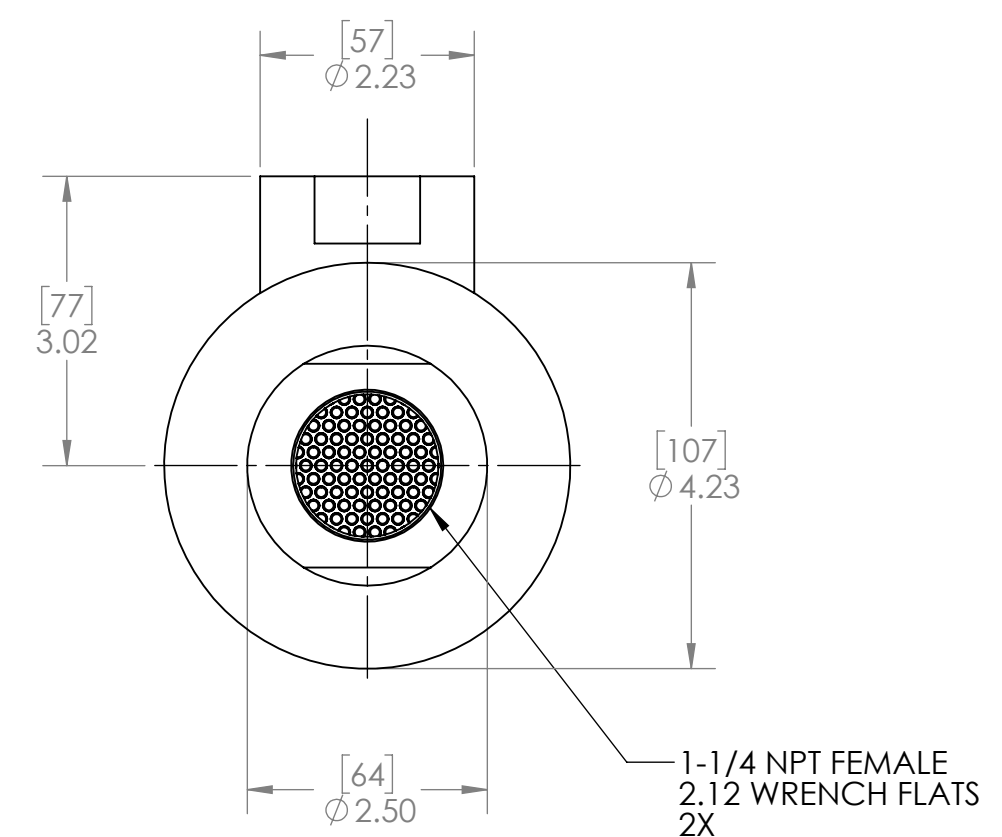
2.00 [51] OD TUBE STUB

1-1/4 NPT FEMALE

The drawing shows a side view of a cylindrical tube stub. It has a central section and two flared end sections. Each end section is connected to a square flange. The central section is labeled '2.00 [51] OD TUBE STUB'. The flange connections are labeled '1-1/4 NPT FEMALE'.

2.00 [51] OD TUBE STUB

- #	TUBE COUNT	TUBE SIZE	TUBE LENGTH		DIM A		DIM B		WEIGHT EMPTY		TRANSFER AREA	
			in	mm	in	mm	in	mm	lb	kg	ft²	m²
- 01	421	1/8" [3.2] X .012 [.32] WALL	10.00	254	14.50	368	6.96	177	20.04	9.09	10.82	1.01
- 02			15.00	381	19.50	495	11.96	304	24.90	11.29	16.57	1.54
- 03			20.00	508	24.50	622	16.96	431	29.78	13.51	22.31	2.07
- 04			25.00	635	29.50	749	21.96	558	34.66	15.72	28.05	2.61
- 05			30.00	762	34.50	876	26.96	685	39.55	17.94	33.79	3.14
- 06	163	3/16" [4.8] X .020 [.5] WALL	10.00	254	14.50	368	6.96	177	19.77	8.97	6.29	0.58
- 07			15.00	381	19.50	495	11.96	304	24.42	11.08	9.62	0.89
- 08			20.00	508	24.50	622	16.96	431	29.12	13.21	12.95	1.20
- 09			25.00	635	29.50	749	21.96	558	33.84	15.35	16.29	1.51
- 10			30.00	762	34.50	876	26.96	685	38.53	17.48	19.62	1.82
- 11	121	1/4" [6.4] X .035 [.9] WALL	10.00	254	14.50	368	6.96	177	22.65	10.27	6.22	0.58
- 12			15.00	381	19.50	495	11.96	304	28.84	13.08	9.52	0.88
- 13			20.00	508	24.50	622	16.96	431	35.05	15.90	12.82	1.19
- 14			25.00	635	29.50	749	21.96	558	41.27	18.72	16.12	1.50
- 15			30.00	762	34.50	876	26.96	685	47.49	21.54	19.42	1.80
- 16	421	1/8" [3.2] X .020 [.5] WALL	10.00	254	14.50	368	6.96	177	30.04	13.63	10.82	1.01
- 17			15.00	381	19.50	495	11.96	304	34.90	15.83	16.57	1.54
- 18			20.00	508	24.50	622	16.96	431	39.78	18.04	22.31	2.07
- 19			25.00	635	29.50	749	21.96	558	39.66	17.99	28.05	2.61
- 20			30.00	762	34.50	876	26.96	685	44.55	20.21	33.79	3.14
-21	421	1/8" [3.2] X .012 [.32] WALL	40.00	1016	44.50	1130	36.96	939	49.32	22.37	45.92	4.27
- 22	121	1/4" [6.4] X .035 [.9] WALL	40.00	1016	44.50	1130	36.96	939	59.85	27.15	26.40	2.45



DATE	2/22/2018	SCALE	1:2	SHEET	1 OF 1
------	-----------	-------	-----	-------	--------