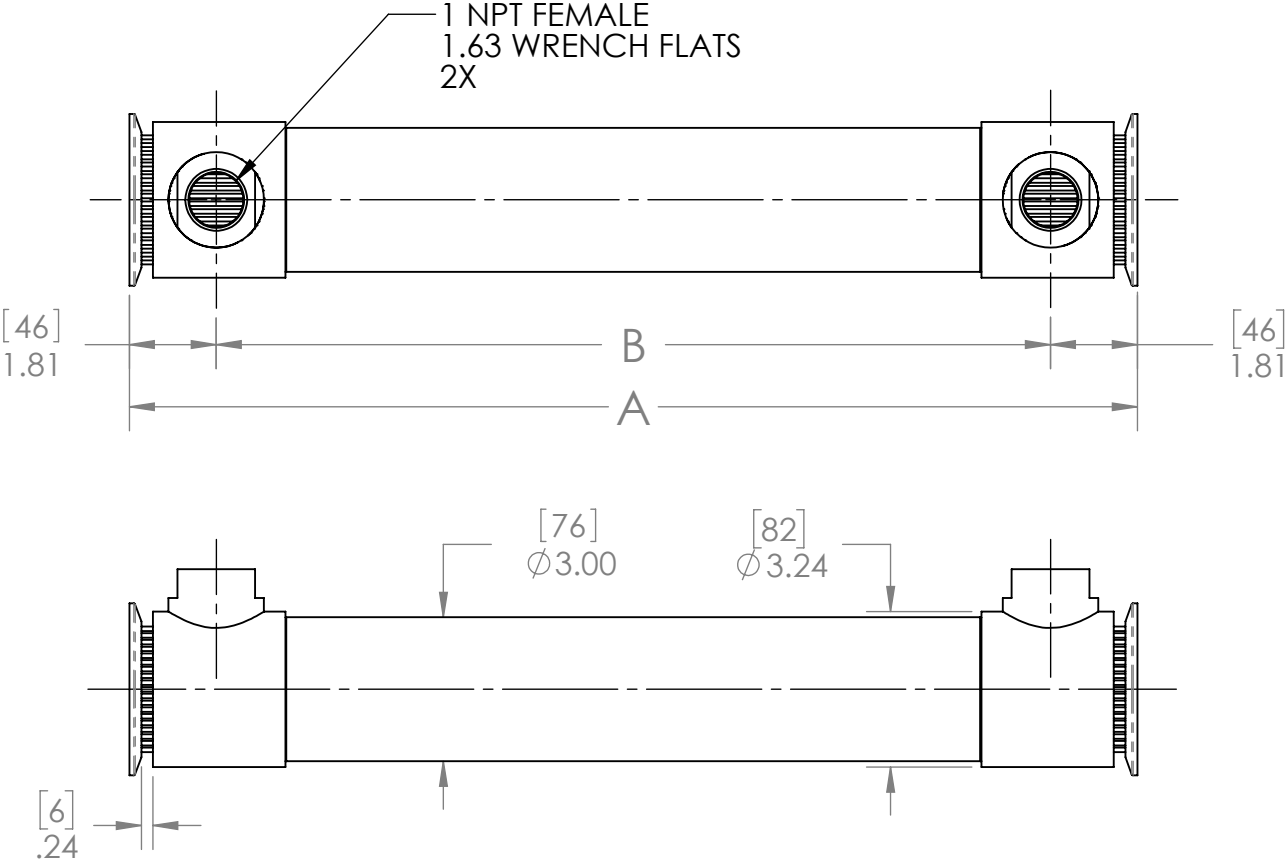
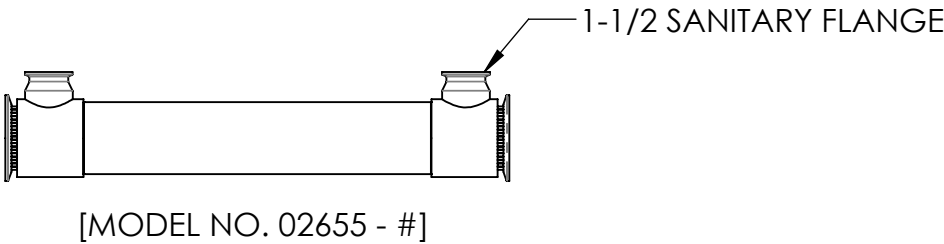


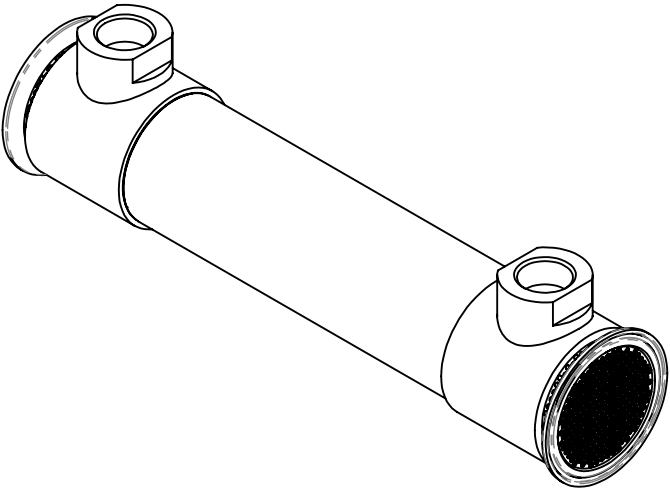
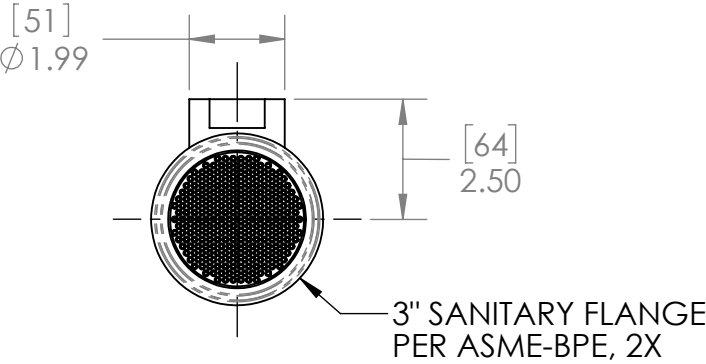
- NOTES:
- MATERIAL: 316L STAINLESS STEEL, NICKEL BRAZED.
 - PRODUCT CONTACT SURFACE FINISH CODE PER ASME-BPE:
SF1: 20 µin. (.5 µm) Ra MAX
SF4: 15 µin. (.4 µm) Ra MAX, ELECTROPOLISHED.
 - ALL EXTERNAL SURFACES SATIN FINISH.
 - MAXIMUM OPERATING CONDITIONS:
 - PRESSURE: TUBESIDE - 700 psi (48 bar)
SHELLSIDE - 400 psi (28 bar)
(REFER TO SANITARY CLAMP MANUFACTURER
FOR CLAMP PRESSURE RATING)
 - TEMPERATURE: 800°F (425°C)
 - PRESSURE FOR STEAM SERVICE: 125 psi (8.6 bar)
 - FLUID TEMPERATURE DIFFERENCE:
 $(T_{HOT})_{AVE} - (T_{COLD})_{AVE} \leq 125^{\circ}F (70^{\circ}C)$
 - FULLY DRAINABLE ON TUBESIDE.
 - MATERIAL AND PROCESS CERTIFICATIONS PROVIDED.



ALSO AVAILABLE



| - # | TUBE COUNT | TUBE LENGTH | | PRODUCT CONTACT SURFACE FINISH (NOTE 2) | DIM A | | DIM B | | WEIGHT EMPTY | | TRANSFER AREA | |
|------|--------------------|-------------|------|---|-------|------|-------|-----|--------------|-------|---------------|------|
| | | in | mm | | in | mm | in | mm | lb | kg | ft² | m² |
| - 01 | 253 (.013 WALL) | 11.00 | 279 | SF4 | 11.00 | 279 | 7.38 | 187 | 9.38 | 4.25 | 6.51 | 0.60 |
| - 02 | | 16.00 | 406 | | 16.00 | 406 | 12.38 | 314 | 11.89 | 5.39 | 9.96 | 0.93 |
| - 03 | | 21.00 | 533 | | 21.00 | 533 | 17.38 | 441 | 14.41 | 6.53 | 13.40 | 1.24 |
| - 04 | | 26.00 | 660 | | 26.00 | 660 | 22.38 | 568 | 16.92 | 7.67 | 16.85 | 1.57 |
| - 05 | | 31.00 | 787 | | 31.00 | 787 | 27.38 | 695 | 19.43 | 8.81 | 20.30 | 1.89 |
| - 06 | | 11.00 | 279 | | 11.00 | 279 | 7.38 | 187 | 9.38 | 4.25 | 6.51 | 0.60 |
| - 07 | | 16.00 | 406 | | 16.00 | 406 | 12.38 | 314 | 11.89 | 5.39 | 9.96 | 0.93 |
| - 08 | 253 (.020 WALL) | 21.00 | 533 | SF1 | 21.00 | 533 | 17.38 | 441 | 14.41 | 6.53 | 13.40 | 1.24 |
| - 09 | | 26.00 | 660 | | 26.00 | 660 | 22.38 | 568 | 16.92 | 7.67 | 16.85 | 1.57 |
| - 10 | | 31.00 | 787 | | 31.00 | 787 | 27.38 | 695 | 19.43 | 8.81 | 20.30 | 1.89 |
| - 11 | | 11.00 | 279 | | 11.00 | 279 | 7.38 | 187 | 11.13 | 5.05 | 6.51 | 0.60 |
| - 12 | | 16.00 | 406 | | 16.00 | 406 | 12.38 | 314 | 14.44 | 6.55 | 9.96 | 0.93 |
| - 13 | | 21.00 | 533 | | 21.00 | 533 | 17.38 | 441 | 17.75 | 8.05 | 13.40 | 1.24 |
| - 14 | | 26.00 | 660 | | 26.00 | 660 | 22.38 | 568 | 21.06 | 9.55 | 16.85 | 1.57 |
| - 15 | 55 (.035 WALL) | 31.00 | 787 | SF4 | 31.00 | 787 | 27.38 | 695 | 24.38 | 11.06 | 20.30 | 1.89 |
| - 16 | | 11.00 | 279 | | 11.00 | 279 | 7.38 | 187 | 11.13 | 5.05 | 6.51 | 0.60 |
| - 17 | | 16.00 | 406 | | 16.00 | 406 | 12.38 | 314 | 14.44 | 6.55 | 9.96 | 0.93 |
| - 18 | | 21.00 | 533 | | 21.00 | 533 | 17.38 | 441 | 17.75 | 8.05 | 13.40 | 1.24 |
| - 19 | | 26.00 | 660 | | 26.00 | 660 | 22.38 | 568 | 21.06 | 9.55 | 16.85 | 1.57 |
| - 20 | | 31.00 | 787 | | 31.00 | 787 | 27.38 | 695 | 24.38 | 11.06 | 20.30 | 1.89 |
| - 21 | | 11.00 | 279 | | 11.00 | 279 | 7.38 | 187 | 10.23 | 4.64 | 2.83 | 0.26 |
| - 22 | 253 (.013 WALL) | 16.00 | 406 | SF1 | 16.00 | 406 | 12.38 | 314 | 12.96 | 5.88 | 4.33 | 0.40 |
| - 23 | | 21.00 | 533 | | 21.00 | 533 | 17.38 | 441 | 15.67 | 7.11 | 5.83 | 0.54 |
| - 24 | | 26.00 | 660 | | 26.00 | 660 | 22.38 | 568 | 18.96 | 8.60 | 6.83 | 0.63 |
| - 25 | | 31.00 | 787 | | 31.00 | 787 | 27.38 | 695 | 20.67 | 9.38 | 7.83 | 0.73 |
| - 26 | | 11.00 | 279 | | 11.00 | 279 | 7.38 | 187 | 10.23 | 4.64 | 2.83 | 0.26 |
| - 27 | | 16.00 | 406 | | 16.00 | 406 | 12.38 | 314 | 12.96 | 5.88 | 4.33 | 0.40 |
| - 28 | | 21.00 | 533 | | 21.00 | 533 | 17.38 | 441 | 15.67 | 7.11 | 5.83 | 0.54 |
| - 29 | 253 (.013 WALL) | 26.00 | 660 | SF4 | 26.00 | 660 | 22.38 | 568 | 18.96 | 8.60 | 6.83 | 0.63 |
| - 30 | | 31.00 | 787 | | 31.00 | 787 | 27.38 | 695 | 20.67 | 9.38 | 7.83 | 0.73 |
| - 31 | 253 (.013 WALL) | 41.00 | 1041 | SF1 | 41.00 | 1041 | 37.38 | 949 | 24.45 | 11.09 | 28.28 | 2.63 |
| - 32 | | 41.00 | 1041 | | 41.00 | 1041 | 37.38 | 949 | 24.45 | 11.09 | 28.28 | 2.63 |



ALL DIMENSIONS ARE IN INCHES [mm]

PROPRIETARY AND CONFIDENTIAL
THE INFORMATION CONTAINED IN THIS DOCUMENT IS THE SOLE PROPERTY OF EXERGY, LLC. ANY REPRODUCTION, DISCLOSURE, OR USE, IN PART OR AS A WHOLE, WITHOUT THE WRITTEN PERMISSION OF EXERGY, LLC IS PROHIBITED.

PRODUCT SPECIFICATIONS SUBJECT TO CHANGE WITHOUT NOTICE. MANUFACTURER ASSUMES NO LIABILITY FOR MISUSE OR ABUSE OF PRODUCT. SPECIFIC WARRANTY INFORMATION IS AVAILABLE UPON REQUEST.

THIRD ANGLE PROJECTION



EXERGY
HEAT TRANSFER SOLUTIONS

320 ENDO BLVD.
GARDEN CITY, NY 11530
USA (516)832-9300
www.exergyllc.com

SHELL & TUBE HEAT EXCHANGER
73 SERIES SANITARY
DOUBLE TUBESHEET, 1" NPT

MODEL NO. 02626 - #

DATE 1/18/2018 SCALE 1:4 SHEET 1 OF 1