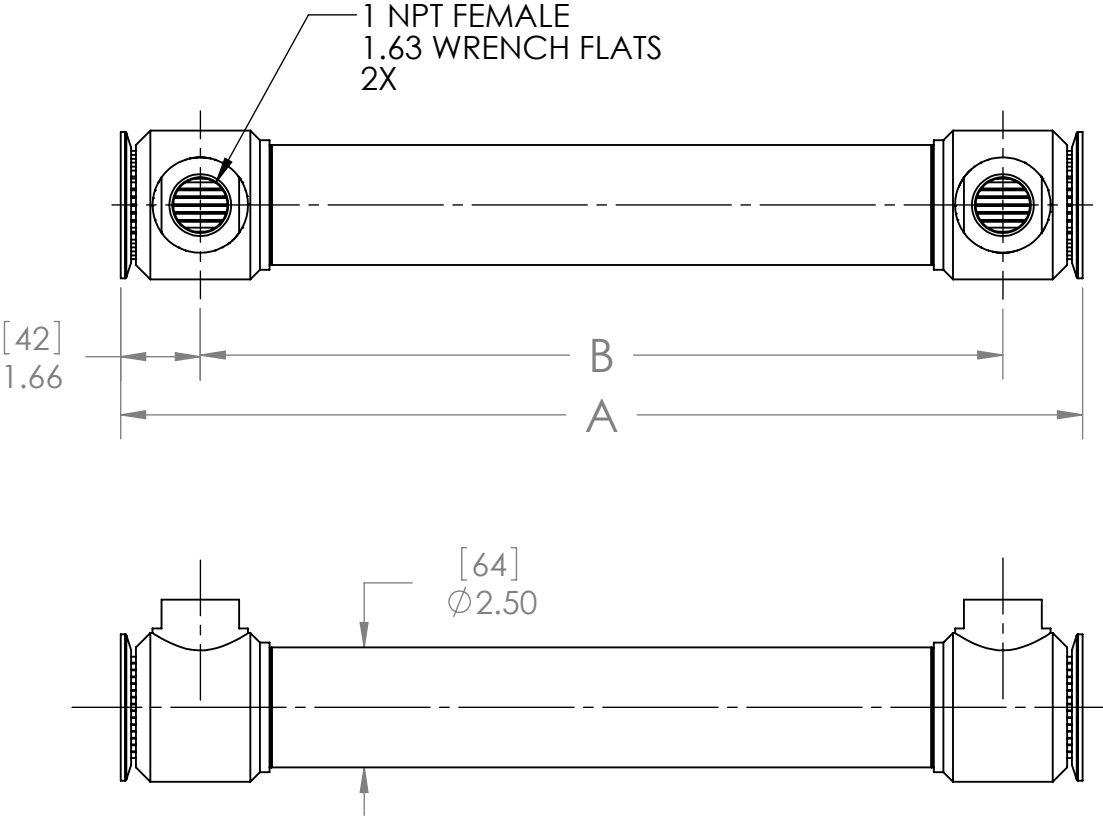
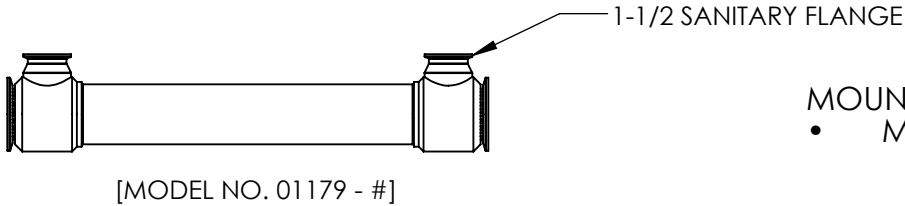


- NOTES:
1. MATERIAL: 316L STAINLESS STEEL, NICKEL BRAZED.
 2. PRODUCT CONTACT SURFACE FINISH CODE PER ASME-BPE:
SF1: 20 µin. (.5 µm) Ra MAX
SF4: 15 µin. (.4 µm) Ra MAX, ELECTROPOLISHED.
 3. ALL EXTERNAL SURFACES SATIN FINISH.
 4. MAXIMUM OPERATING CONDITIONS:
 - PRESSURE: TUBESIDE - 600 psi (41 bar)
SHELLSIDE - 400 psi (28 bar)
(REFER TO SANITARY CLAMP MANUFACTURER
FOR CLAMP PRESSURE RATING)
 - TEMPERATURE: 800°F (425°C)
 - PRESSURE FOR STEAM SERVICE: 125 psi (8.6 bar)
 - FLUID TEMPERATURE DIFFERENCE:
 $(T_{HOT})_{AVE} - (T_{COLD})_{AVE} \leq 125^{\circ}F (70^{\circ}C)$
 5. FULLY DRAINABLE ON TUBESIDE.
 6. MATERIAL AND PROCESS CERTIFICATIONS PROVIDED.

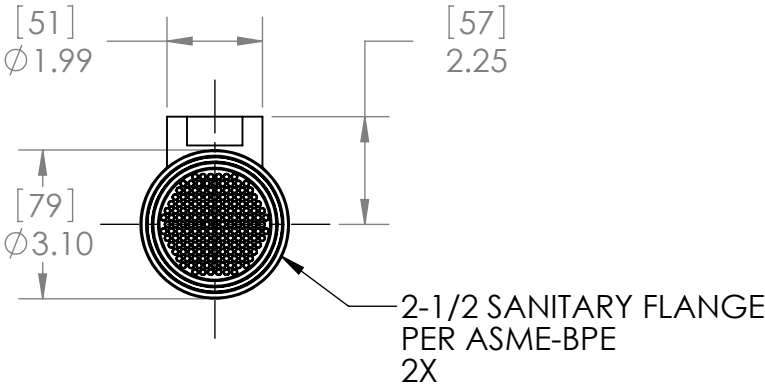
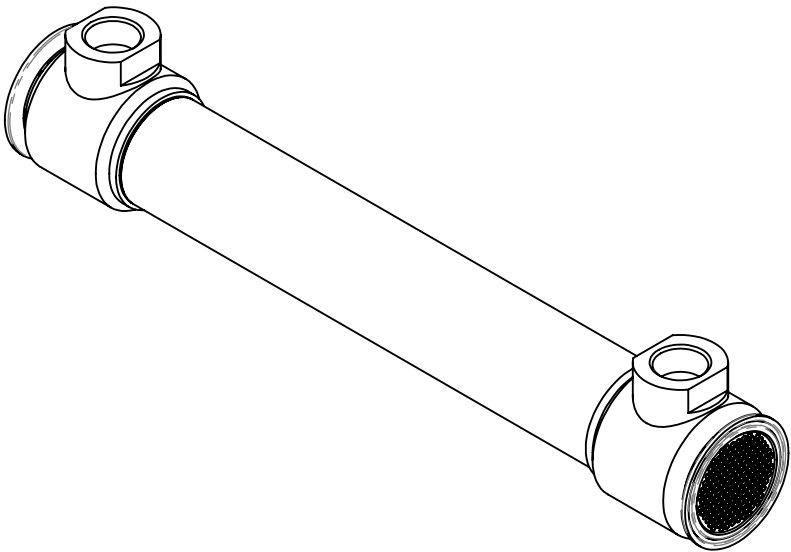


ALSO AVAILABLE



- MOUNTING KIT:
- MODEL 01022-03

- #	TUBE COUNT	TUBE LENGTH		PRODUCT CONTACT SURFACE FINISH (NOTE 2)	DIM A		DIM B		WEIGHT EMPTY		TRANSFER AREA	
		in	mm		in	mm	in	mm	lb	kg	ft²	m²
- 01	163	10.00	254	SF4	10.04	255	6.72	171	8.68	3.94	3.91	0.36
- 02		15.00	381		15.04	382	11.72	298	10.47	4.75	6.13	0.57
- 03		20.00	508		20.04	509	16.72	425	12.25	5.56	8.35	0.78
- 04		10.00	254	SF1	10.04	255	6.72	171	8.68	3.94	3.91	0.36
- 05		15.00	381		15.04	382	11.72	298	10.47	4.75	6.13	0.57
- 06		20.00	508		20.04	509	16.72	425	12.25	5.56	8.35	0.78
- 13		25.00	635	SF4	25.04	636	21.72	552	14.03	6.36	10.57	0.98
- 14		30.00	762		30.04	763	26.72	679	15.82	7.18	12.80	1.19
- 15		25.00	635	SF1	25.04	636	21.72	552	14.03	6.36	10.57	0.98
- 16		30.00	762		30.04	763	26.72	679	15.82	7.18	12.80	1.19
- 17		40.00	1016	SF4	40.04	1017	36.72	933	19.39	8.80	17.27	1.60
- 18		40.00	1016	SF1	40.04	1017	36.72	933	19.39	8.80	17.27	1.60



ALL DIMENSIONS ARE IN INCHES [mm]

PROPRIETARY AND CONFIDENTIAL
THE INFORMATION CONTAINED IN THIS DOCUMENT IS THE SOLE PROPERTY OF EXERGY, LLC. ANY REPRODUCTION, DISCLOSURE, OR USE, IN PART OR AS A WHOLE, WITHOUT THE WRITTEN PERMISSION OF EXERGY, LLC IS PROHIBITED.

PRODUCT SPECIFICATIONS SUBJECT TO CHANGE WITHOUT NOTICE. MANUFACTURER ASSUMES NO LIABILITY FOR MISUSE OR ABUSE OF PRODUCT. SPECIFIC WARRANTY INFORMATION IS AVAILABLE UPON REQUEST.

THIRD ANGLE PROJECTION



EXERGY
HEAT TRANSFER SOLUTIONS

320 ENDO BLVD.
GARDEN CITY, NY 11530
USA (516)832-9300
www.exergyllc.com

SHELL & TUBE HEAT EXCHANGER
60 SERIES SANITARY
DOUBLE TUBESHEET, 1 NPT

MODEL NO. 01182 - #

DATE 1/18/2018 SCALE 1:4 SHEET 1 OF 1