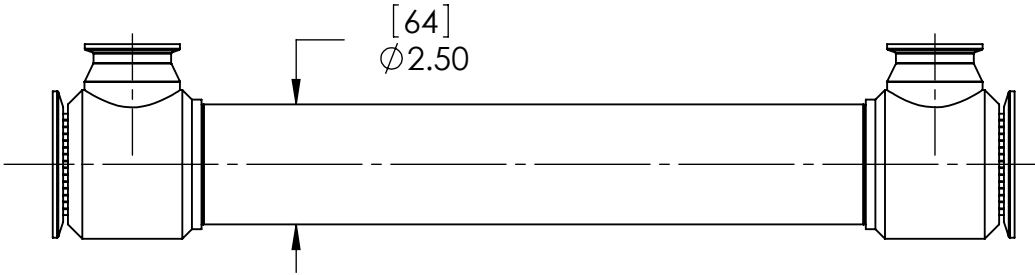
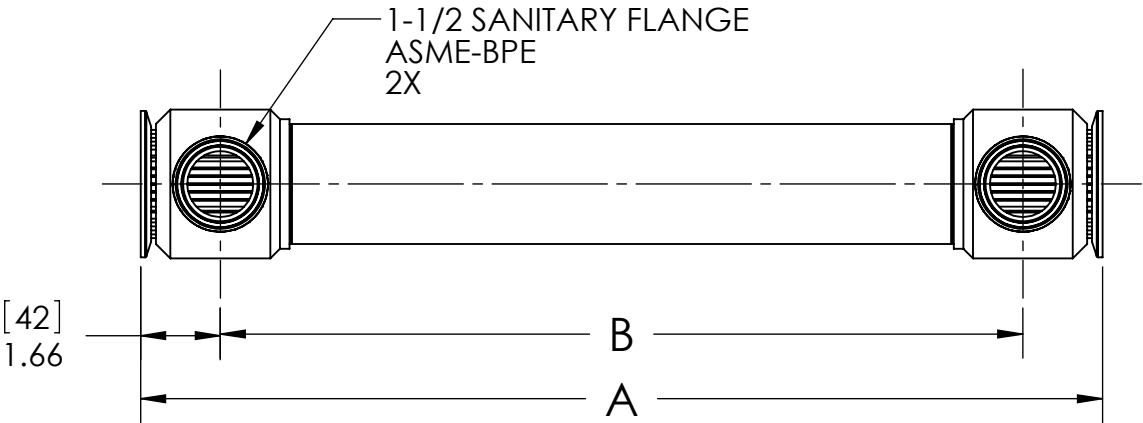
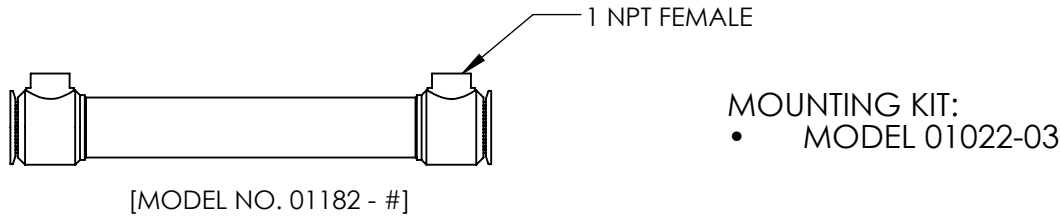


- NOTES:
- 1. MATERIAL: 316L STAINLESS STEEL, NICKEL BRAZED.
 - 2. PRODUCT CONTACT SURFACE FINISH CODE PER ASME-BPE:
SF1: 20 µin. (.5 µm) Ra MAX
SF4: 15 µin. (.4 µm) Ra MAX, ELECTROPOLISHED.
 - 3. ALL EXTERNAL SURFACES SATIN FINISH.
 - 4. MAXIMUM OPERATING CONDITIONS:
 - PRESSURE: TUBESIDE - 600 psi (41 bar)
SHELLSIDE - 400 psi (28 bar)
(REFER TO SANITARY CLAMP MANUFACTURER FOR CLAMP PRESSURE RATING)
 - TEMPERATURE: 800°F (425°C)
 - PRESSURE FOR STEAM SERVICE: 125 psi (8.6 bar)
 - FLUID TEMPERATURE DIFFERENCE:
(THOT)AVE - (TCOLD)AVE ≤125°F (70°C)
 - 5. FULLY DRAINABLE ON TUBESIDE.
 - 6. MATERIAL AND PROCESS CERTIFICATIONS PROVIDED.

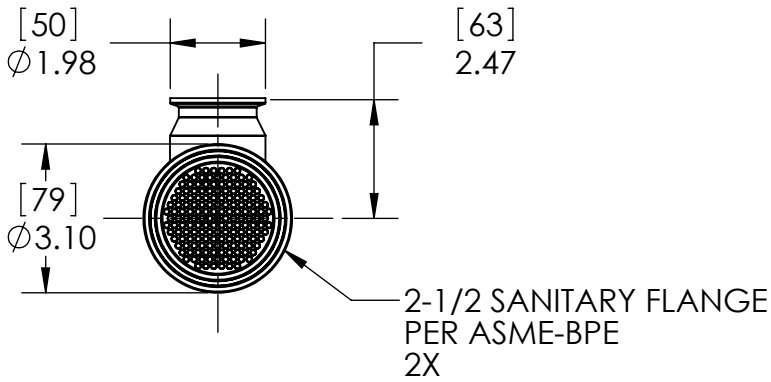
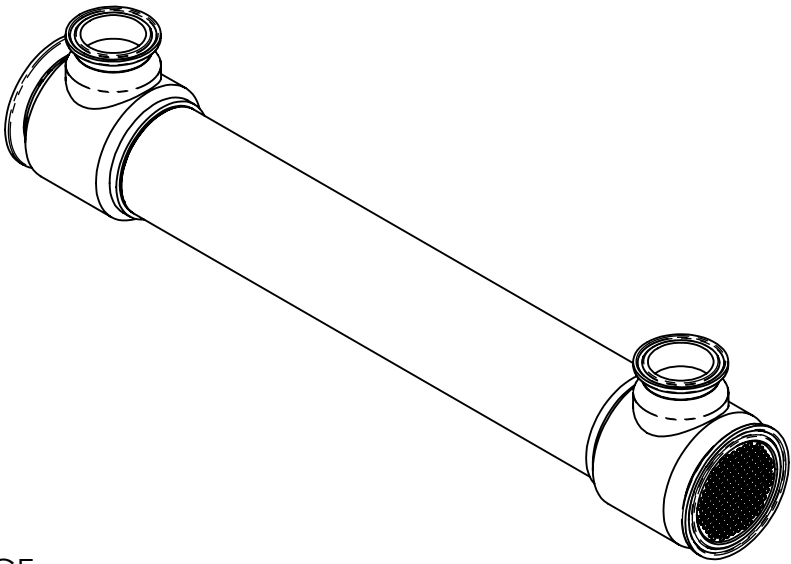


CONFIGURATION "V"

ALSO AVAILABLE



- #	TUBE COUNT	TUBE LENGTH		PRODUCT CONTACT SURFACE FINISH (NOTE 2)	DIM A		DIM B		WEIGHT EMPTY		TRANSFER AREA	
		in	mm		in	mm	in	mm	lb	kg	ft²	m²
- 01	163	10.00	254	SF4	10.04	255	6.72	171	8.33	3.78	3.91	0.36
- 02		15.00	381		15.04	382	11.72	298	10.11	4.59	6.13	0.57
- 03		20.00	508		20.04	509	16.72	425	11.89	5.39	8.35	0.78
- 04		10.00	254		10.04	255	6.72	171	8.33	3.78	3.91	0.36
- 05	85	15.00	381	SF1	15.04	382	11.72	298	10.11	4.59	6.13	0.57
- 06		20.00	508		20.04	509	16.72	425	11.89	5.39	8.35	0.78
- 07		10.00	254		10.04	255	6.72	171	8.76	3.97	3.01	0.28
- 08		15.00	381		15.04	382	11.72	298	10.84	4.91	4.73	0.44
- 09	163	20.00	508	SF4	20.04	509	16.72	425	12.91	5.85	6.45	0.60
- 10		10.00	254		10.04	255	6.72	171	8.76	3.97	3.01	0.28
- 11		15.00	381		15.04	382	11.72	298	10.84	4.91	4.73	0.44
- 12		20.00	508		20.04	509	16.72	425	12.91	5.85	6.45	0.60
- 13	85	25.00	635	SF1	25.04	636	21.72	552	13.68	6.21	10.57	0.98
- 14		30.00	762		30.04	763	26.72	679	15.46	7.01	12.80	1.19
- 15		25.00	635		25.04	636	21.72	552	13.68	6.21	10.57	0.98
- 16		30.00	762		30.04	763	26.72	679	15.46	7.01	12.80	1.19
- 17	163	25.00	635	SF4	25.04	636	21.72	552	14.98	6.79	8.16	0.76
- 18		30.00	762		30.04	763	26.72	679	17.05	7.73	9.88	0.92
- 19		25.00	635		25.04	636	21.72	552	14.98	6.79	8.16	0.76
- 20		30.00	762		30.04	763	26.72	679	17.05	7.73	9.88	0.92
- 41	85	40.00	1016	SF4	40.04	1017	36.72	933	21.86	9.92	17.78	1.65
- 42		40.00	1016	SF1	40.04	1017	36.72	933	21.86	9.92	17.78	1.65



ALL DIMENSIONS ARE IN INCHES [mm]

PROPRIETARY AND CONFIDENTIAL

THE INFORMATION CONTAINED IN THIS DOCUMENT IS THE SOLE PROPERTY OF EXERGY, LLC. ANY REPRODUCTION, DISCLOSURE, OR USE, IN PART OR AS A WHOLE, WITHOUT THE WRITTEN PERMISSION OF EXERGY, LLC IS PROHIBITED.

PRODUCT SPECIFICATIONS SUBJECT TO CHANGE WITHOUT NOTICE. MANUFACTURER ASSUMES NO LIABILITY FOR MISUSE OR ABUSE OF PRODUCT. SPECIFIC WARRANTY INFORMATION IS AVAILABLE UPON REQUEST.

THIRD ANGLE PROJECTION

ExERGY
HEAT TRANSFER SOLUTIONS

320 ENDO BLVD.
GARDEN CITY, NY 11530
USA (516)832-9300
www.exergyllc.com

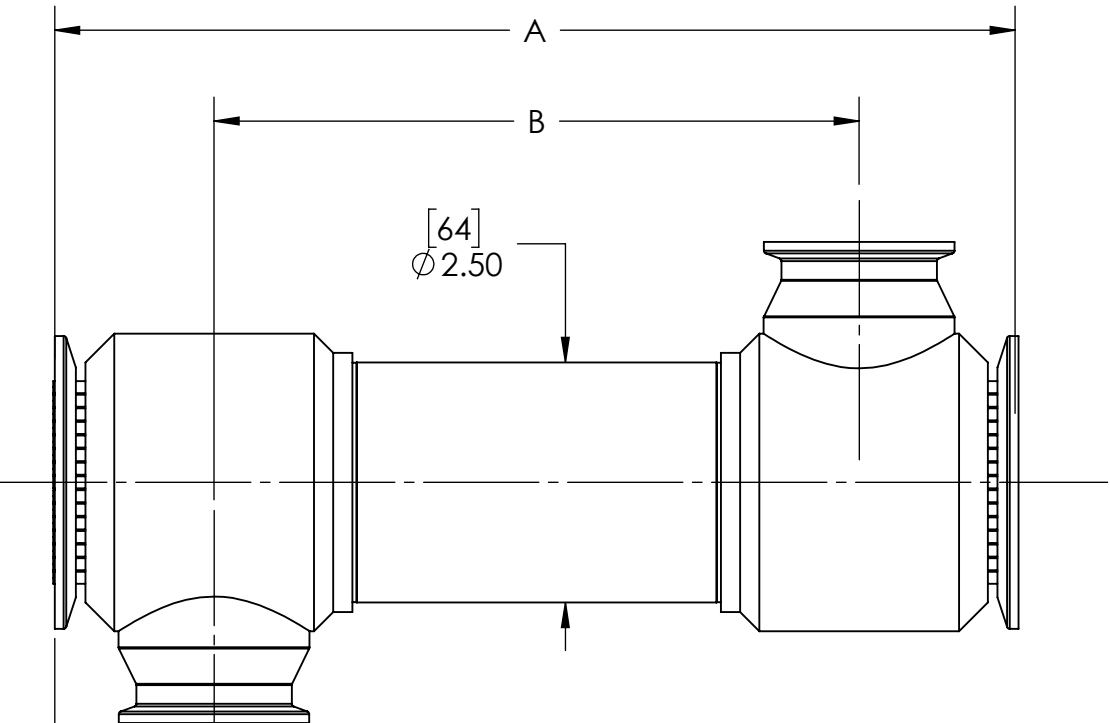
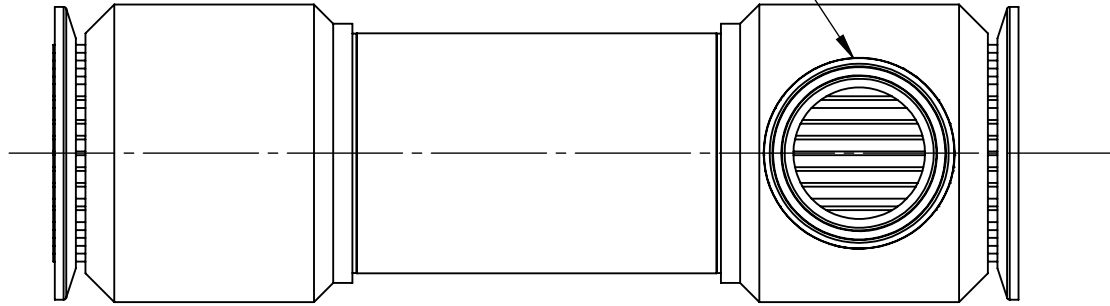
SHELL & TUBE HEAT EXCHANGER
60 SERIES SANITARY
DOUBLE TUBESHEET, SANITARY ALL PORTS

MODEL NO. **01179 - #**

DATE **9/23/2014** SCALE **1:4** SHEET **1 OF 2**

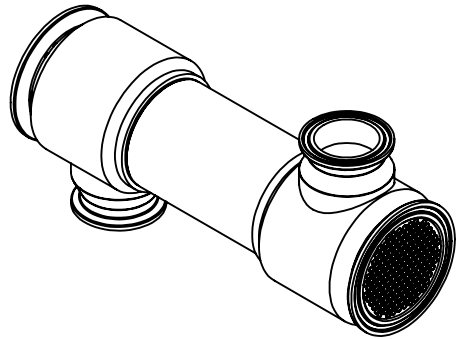
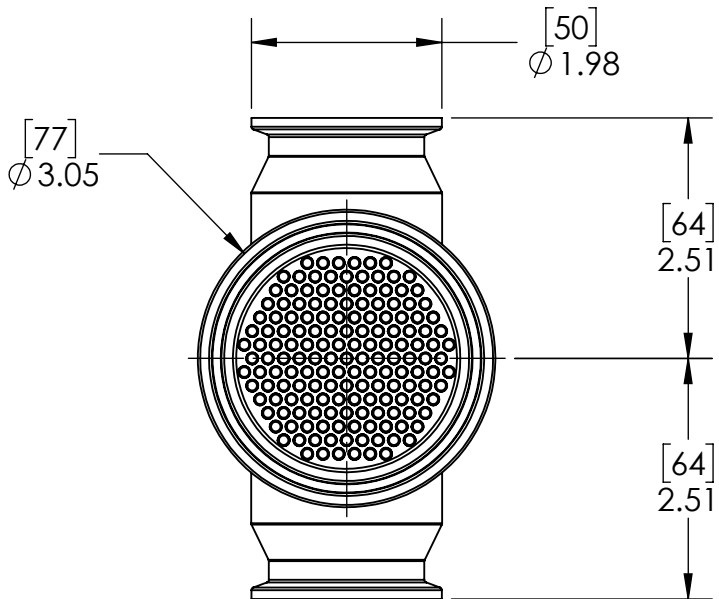
MODEL NO. 01179 - #

1-1/2" SANITARY FLANGE
ASME-BPE
2X



CONFIGURATION "W"

- #	TUBE COUNT	TUBE LENGTH		PRODUCT CONTACT SURFACE FINISH (NOTE 2)	DIM A		DIM B		WEIGHT EMPTY		TRANSFER AREA	
		in	mm		in	mm	in	mm	lb	kg	ft²	m²
- 21	85	10.00	254	SF4	10.04	255	6.72	171	8.76	3.97	3.01	0.28
- 22		15.00	381		15.04	382	11.72	298	10.84	4.91	4.73	0.44
- 23		20.00	508		20.04	509	16.72	425	12.91	5.85	6.45	0.60
- 24		25.00	635		25.04	636	21.72	552	14.98	6.79	8.16	0.76
- 25		30.00	762		30.04	763	26.72	679	17.05	7.73	9.88	0.92
- 26		10.00	254		10.04	255	6.72	171	8.76	3.97	3.01	0.28
- 27	85	15.00	381	SF1	15.04	382	11.72	298	10.84	4.91	4.73	0.44
- 28		20.00	508		20.04	509	16.72	425	12.91	5.85	6.45	0.60
- 29		25.00	635		25.04	636	21.72	552	14.98	6.79	8.16	0.76
- 30		30.00	762		30.04	763	26.72	679	17.05	7.73	9.88	0.92
- 31	163	10.00	254	SF4	10.04	255	6.72	171	8.33	3.78	3.91	0.36
- 32		15.00	381		15.04	382	11.72	298	10.11	4.59	6.13	0.57
- 33		20.00	508		20.04	509	16.72	425	11.89	5.39	8.35	0.78
- 34		25.00	635		25.04	636	21.72	552	13.68	6.21	10.57	0.98
- 35		30.00	762		30.04	763	26.72	679	15.46	7.01	12.80	1.19
- 36		10.00	254		10.04	255	6.72	171	8.33	3.78	3.91	0.36
- 37		15.00	381	SF1	15.04	382	11.72	298	10.11	4.59	6.13	0.57
- 38		20.00	508		20.04	509	16.72	425	11.89	5.39	8.35	0.78
- 39		25.00	635		25.04	636	21.72	552	13.68	6.21	10.57	0.98
- 40		30.00	762		30.04	763	26.72	679	15.46	7.01	12.80	1.19



PROPRIETARY AND CONFIDENTIAL
THE INFORMATION CONTAINED IN THIS DOCUMENT IS THE SOLE PROPERTY OF EXERGY, LLC. ANY REPRODUCTION, DISCLOSURE, OR USE, IN PART OR AS A WHOLE, WITHOUT THE WRITTEN PERMISSION OF EXERGY, LLC IS PROHIBITED.

PRODUCT SPECIFICATIONS SUBJECT TO CHANGE WITHOUT NOTICE. MANUFACTURER ASSUMES NO LIABILITY FOR MISUSE OR ABUSE OF PRODUCT. SPECIFIC WARRANTY INFORMATION IS AVAILABLE UPON REQUEST.

THIRD ANGLE PROJECTION

ExERGY
HEAT TRANSFER SOLUTIONS

320 ENDO BLVD.
GARDEN CITY, NY 11530
USA (516)832-9300
www.exergyllc.com

**SHELL & TUBE HEAT EXCHANGER
60 SERIES SANITARY
DOUBLE TUBESHEET, SANITARY ALL PORTS**

MODEL NO. **01179 - #**

DATE **9/23/2014** SCALE **1:4** SHEET **2 OF 2**

MODEL NO. 01179 - #