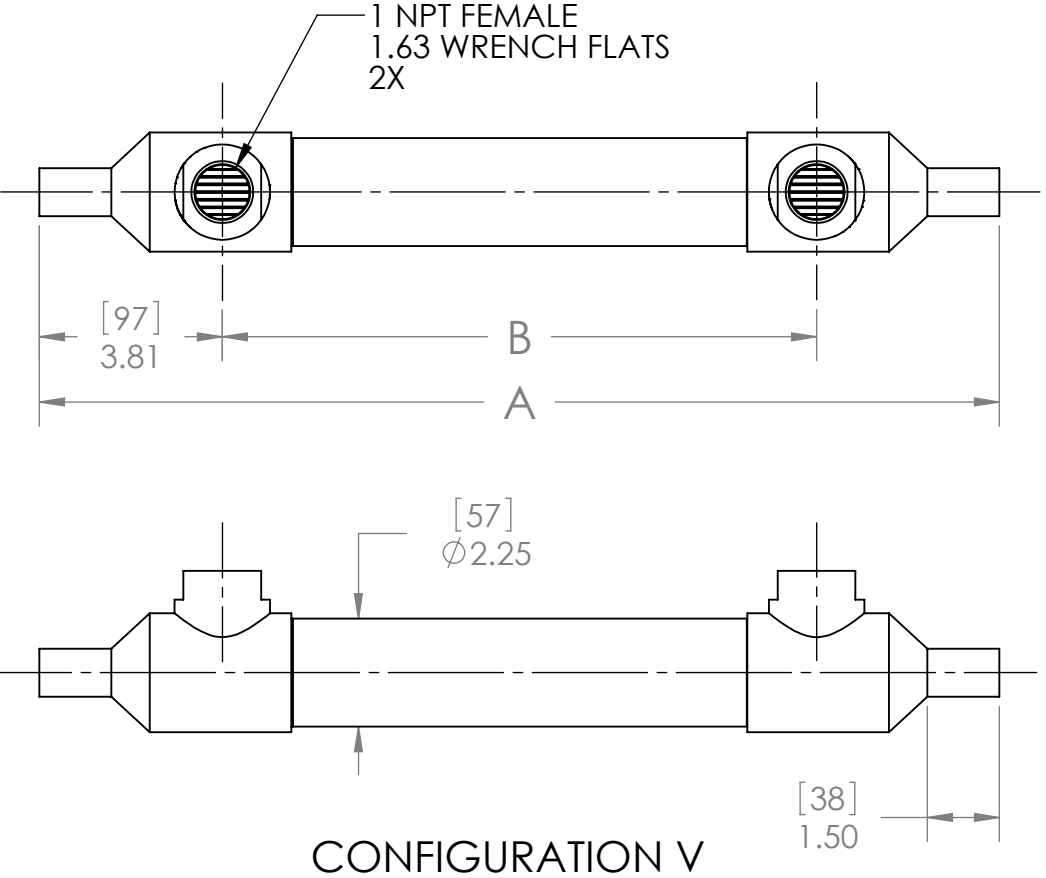
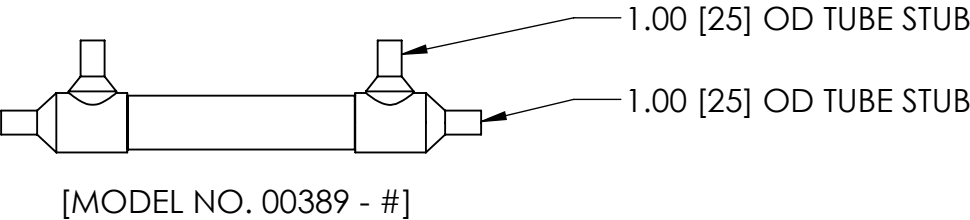
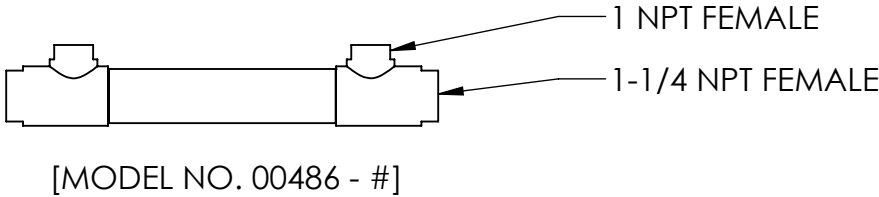


- NOTES:
- 1. MATERIAL: 316L STAINLESS STEEL, NICKEL BRAZED.
 - 2. ALL EXTERNAL SURFACES SATIN FINISH.
 - 3. MAXIMUM OPERATING CONDITIONS:
 - PRESSURE: TUBESIDE - 750 psi (52 bar)
SHELLSIDE - 500 psi (34 bar)
 - TEMPERATURE: 800°F (425°C)
 - PRESSURE FOR STEAM SERVICE: 125 psi (8.6 bar)
 - FLUID TEMPERATURE DIFFERENCE:
 $(T_{HOT})_{AVE} - (T_{COLD})_{AVE} \leq 125^{\circ}F (70^{\circ}C)$

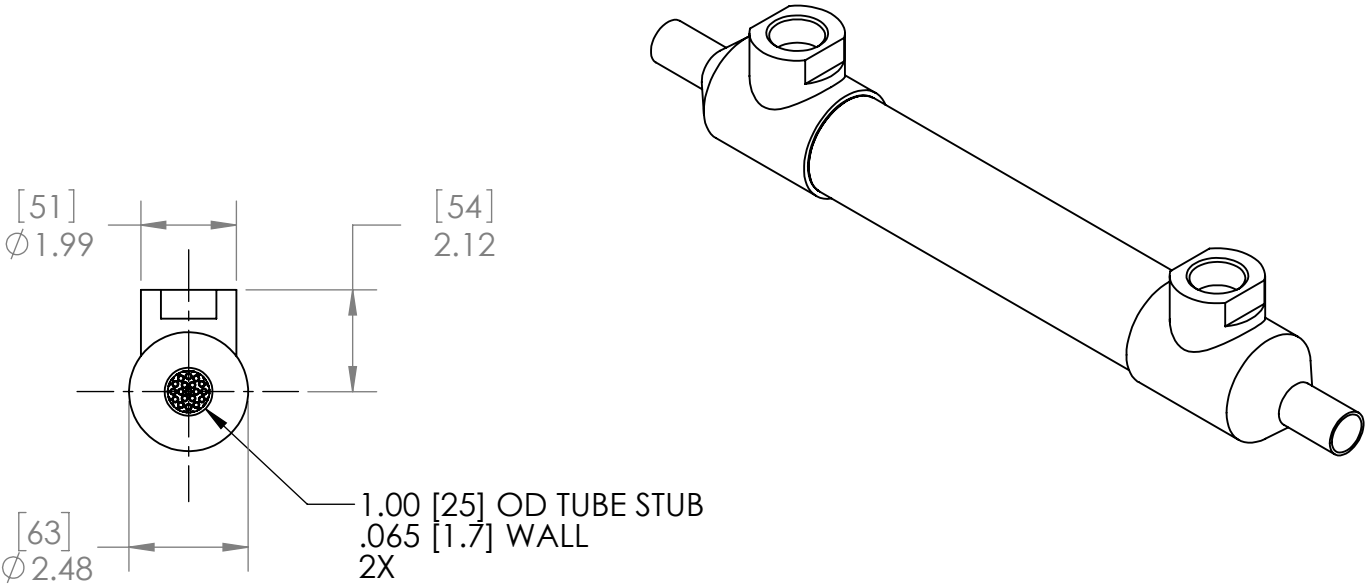


ALSO AVAILABLE



- #	TUBE COUNT	CONFIG	TUBE LENGTH		DIM A		DIM B		WEIGHT EMPTY		TRANSFER AREA	
			in	mm	in	mm	in	mm	lb	kg	ft²	m²
- 01	127	V	10.00	254	15.00	381	7.38	187	7.80	3.54	3.27	0.30
- 02			15.00	381	20.00	508	12.38	314	9.00	4.08	5.00	0.46
- 03			20.00	508	25.00	635	17.38	441	10.30	4.67	6.73	0.63
- 04	253		10.00	254	15.00	381	7.38	187	8.50	3.86	4.89	0.45
- 05			15.00	381	20.00	508	12.38	314	9.80	4.45	7.49	0.70
- 06			20.00	508	25.00	635	17.38	441	11.50	5.22	10.08	0.94
- 07	127		25.00	635	30.00	762	22.38	568	12.17	5.52	8.46	0.79
- 08			30.00	762	35.00	889	27.38	695	13.64	6.19	10.19	0.95
- 09	253		25.00	635	30.00	762	22.38	568	12.92	5.86	12.67	1.18
- 10			30.00	762	35.00	889	27.38	695	14.55	6.60	15.27	1.42
-21			40.00	1016	45.00	1143	37.38	949	17.60	7.98	20.75	1.93
-22	127		40.00	1016	45.00	1143	37.38	949	16.98	7.70	13.85	1.29

TABLE CONTINUED ON PAGE 2



ALL DIMENSIONS ARE IN INCHES [mm]

PROPRIETARY AND CONFIDENTIAL
THE INFORMATION CONTAINED IN THIS DOCUMENT IS THE SOLE PROPERTY OF EXERGY, LLC. ANY REPRODUCTION, DISCLOSURE, OR USE, IN PART OR AS A WHOLE, WITHOUT THE WRITTEN PERMISSION OF EXERGY, LLC IS PROHIBITED.

PRODUCT SPECIFICATIONS SUBJECT TO CHANGE WITHOUT NOTICE. MANUFACTURER ASSUMES NO LIABILITY FOR MISUSE OR ABUSE OF PRODUCT. SPECIFIC WARRANTY INFORMATION IS AVAILABLE UPON REQUEST.

THIRD ANGLE
PROJECTION



EXERGY
HEAT TRANSFER SOLUTIONS

320 ENDO BLVD.
GARDEN CITY, NY 11530
USA (516)832-9300
www.exergyllc.com

SHELL & TUBE HEAT EXCHANGER
54 SERIES
TUBE SIDE TUBE STUB

MODEL NO. 00577 - #

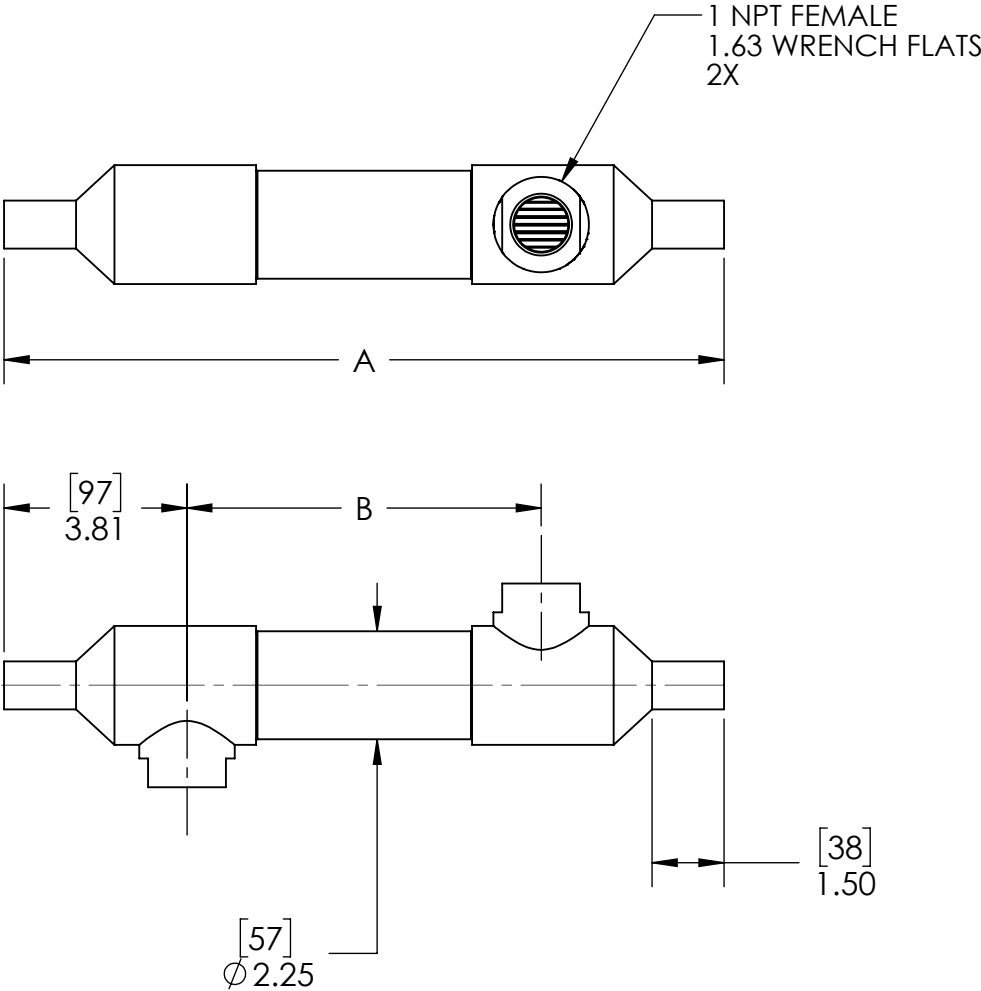
DATE 12/20/2017 SCALE 1:4 SHEET 1 OF 2

MODEL NO.

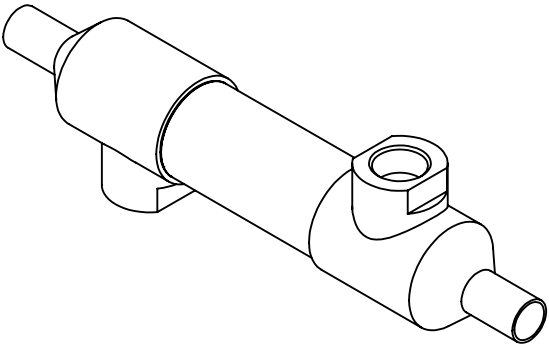
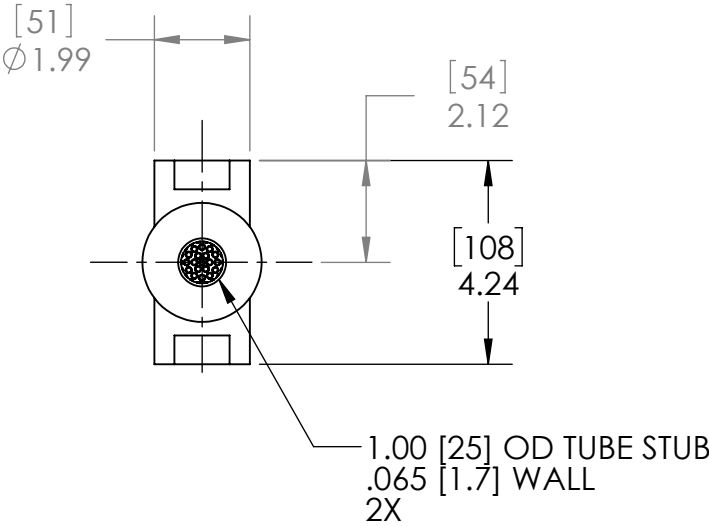
00577 - #

- NOTES:
- 1. MATERIAL: 316L STAINLESS STEEL, NICKEL BRAZED.
 - 2. ALL EXTERNAL SURFACES SATIN FINISH.
 - 3. MAXIMUM OPERATING CONDITIONS:
 - PRESSURE: TUBESIDE - 750 psi (52 bar)
SHELLSIDE - 500 psi (34 bar)
 - TEMPERATURE: 800°F (425°C)
 - PRESSURE FOR STEAM SERVICE: 125 psi (8.6 bar)
 - FLUID TEMPERATURE DIFFERENCE:
 $(T_{HOT})_{AVE} - (T_{COLD})_{AVE} \leq 125^{\circ}F (70^{\circ}C)$

- #	TUBE COUNT	CONFIG	TUBE LENGTH		DIM A		DIM B		WEIGHT EMPTY		TRANSFER AREA	
			in	mm	in	mm	in	mm	lb	kg	ft²	m²
-11	127	W	10.00	254	15.00	381	7.38	187	7.80	3.54	3.27	0.30
-12			15.00	381	20.00	508	12.38	314	9.00	4.08	5.00	0.46
-13			20.00	508	25.00	635	17.38	441	10.30	4.67	6.73	0.63
-14	253		10.00	254	15.00	381	7.38	187	8.50	3.86	4.89	0.45
-15			15.00	381	20.00	508	12.38	314	9.80	4.45	7.49	0.70
-16			20.00	508	25.00	635	17.38	441	11.50	5.22	10.08	0.94
-17	127		25.00	635	30.00	762	22.38	568	12.17	5.52	8.46	0.79
-18			30.00	762	35.00	889	27.38	695	13.64	6.19	10.19	0.95
-19	253		25.00	635	30.00	762	22.38	568	12.92	5.86	12.67	1.18
-20			30.00	762	35.00	889	27.38	695	14.55	6.60	15.27	1.42



CONFIGURATION W



PROPRIETARY AND CONFIDENTIAL
THE INFORMATION CONTAINED IN THIS DOCUMENT IS THE SOLE PROPERTY OF EXERGY, LLC. ANY REPRODUCTION, DISCLOSURE, OR USE, IN PART OR AS A WHOLE, WITHOUT THE WRITTEN PERMISSION OF EXERGY, LLC IS PROHIBITED.

PRODUCT SPECIFICATIONS SUBJECT TO CHANGE WITHOUT NOTICE. MANUFACTURER ASSUMES NO LIABILITY FOR MISUSE OR ABUSE OF PRODUCT. SPECIFIC WARRANTY INFORMATION IS AVAILABLE UPON REQUEST.

THIRD ANGLE
PROJECTION



EXERGY
HEAT TRANSFER SOLUTIONS

320 ENDO BLVD.
GARDEN CITY, NY 11530
USA (516)832-9300
www.exergyllc.com

SHELL & TUBE HEAT EXCHANGER
54 SERIES
TUBE SIDE TUBE STUB

MODEL NO. 00577 - #

DATE 12/20/2017 SCALE 1:4 SHEET 2 OF 2

MODEL NO.

00577 - #