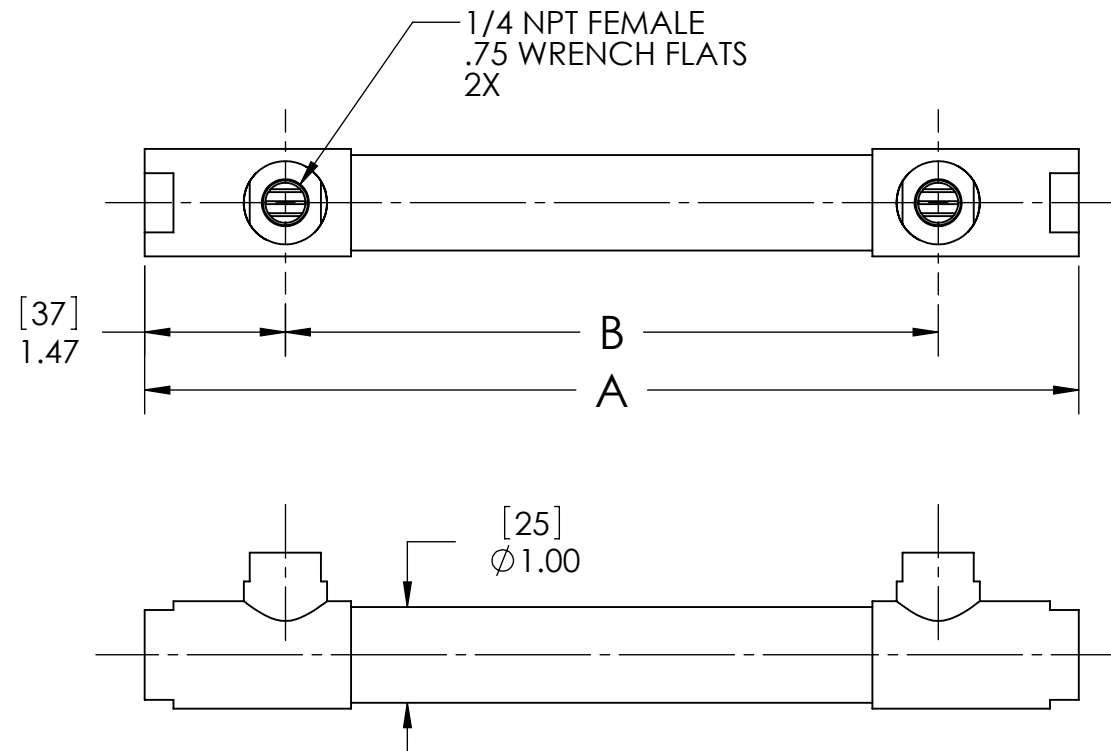
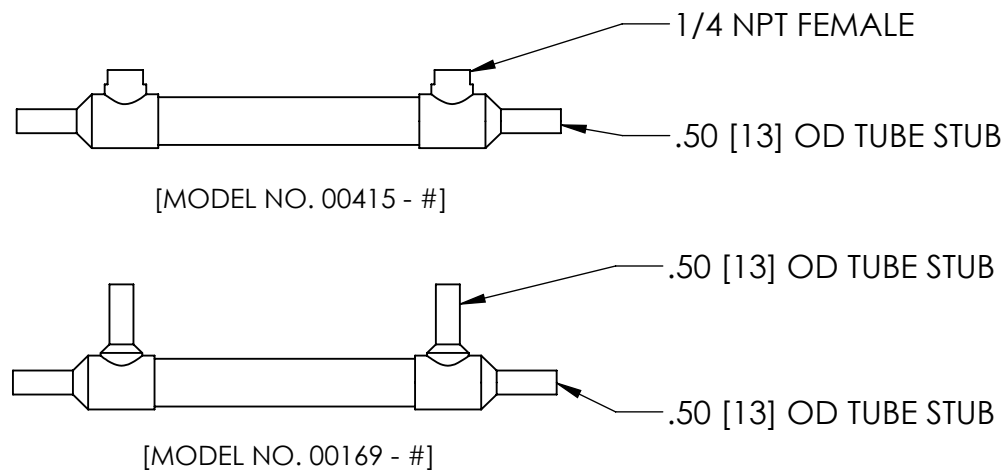


NOTES:

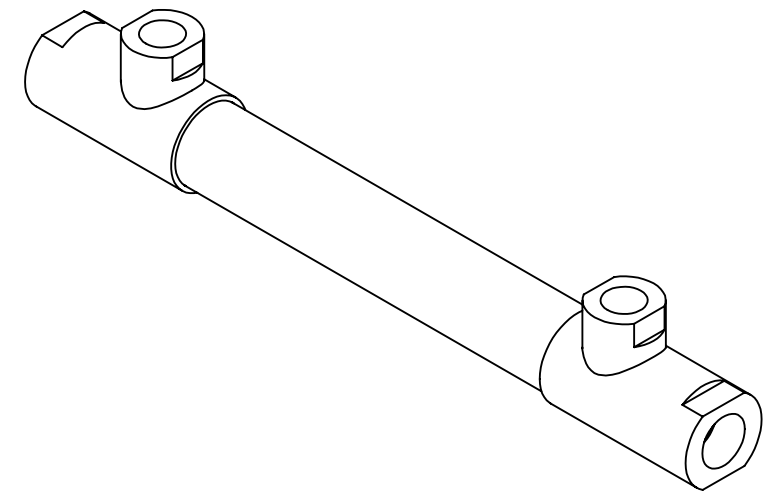
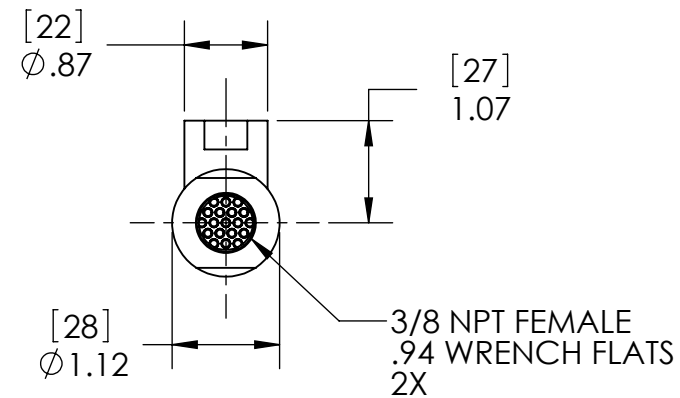
1. MATERIAL: 316L STAINLESS STEEL, NICKEL BRAZED.
2. ALL EXTERNAL SURFACES BUFF POLISH FINISH.
3. MAXIMUM OPERATING CONDITIONS:
 - PRESSURE: TUBESIDE - 1,500 psi (103 bar)
SHELLSIDE - 1,000 psi (69 bar)
 - TEMPERATURE: 800°F (425°C)
 - PRESSURE FOR STEAM SERVICE: 125 psi (8.6 bar)
 - FLUID TEMPERATURE DIFFERENCE:
 $(T_{HOT})_{AVE} - (T_{COLD})_{AVE} \leq 125^{\circ}F (70^{\circ}C)$



ALSO AVAILABLE



- #	TUBE COUNT	TUBE LENGTH		DIM A		DIM B		WEIGHT EMPTY		TRANSFER AREA	
		in	mm	in	mm	in	mm	lb	kg	ft ²	m ²
- 01	37	8.00	203	9.75	248	6.81	173	1.03	0.47	0.58	0.05
- 02		12.00	305	13.75	349	10.81	275	1.25	0.57	0.89	0.08
- 03		16.00	406	17.75	451	14.81	376	1.45	0.66	1.19	0.11
- 04	19	8.00	203	9.75	248	6.81	173	1.00	0.45	0.40	0.04
- 05		12.00	305	13.75	349	10.81	275	1.19	0.54	0.61	0.06
- 06		16.00	406	17.75	451	14.81	376	1.39	0.63	0.81	0.08
- 15	37	20.00	508	21.75	552	18.81	478	1.65	0.75	1.49	0.14
- 16		25.00	635	26.75	679	23.81	605	1.90	0.86	1.86	0.17
- 17		30.00	762	31.75	806	28.81	732	2.15	0.98	2.23	0.21
- 18	19	20.00	508	21.75	552	18.81	478	1.59	0.72	1.01	0.09
- 19		25.00	635	26.75	679	23.81	605	1.84	0.83	1.27	0.12
- 20		30.00	762	31.75	806	28.81	732	2.09	0.95	1.52	0.14



ALL DIMENSIONS ARE IN INCHES [mm]

PROPRIETARY AND CONFIDENTIAL
 THE INFORMATION CONTAINED IN THIS DOCUMENT IS THE SOLE PROPERTY OF EXERGY, LLC. ANY REPRODUCTION, DISCLOSURE, OR USE, IN PART OR AS A WHOLE, WITHOUT THE WRITTEN PERMISSION OF EXERGY, LLC IS PROHIBITED.

PRODUCT SPECIFICATIONS SUBJECT TO CHANGE WITHOUT NOTICE. MANUFACTURER ASSUMES NO LIABILITY FOR MISUSE OR ABUSE OF PRODUCT. SPECIFIC WARRANTY INFORMATION IS AVAILABLE UPON REQUEST.

THIRD ANGLE PROJECTION

EXERGY HEAT TRANSFER SOLUTIONS
 320 ENDO BLVD. GARDEN CITY, NY 11530
 USA (516)832-9300 www.exergyllc.com

SHELL & TUBE HEAT EXCHANGER
23 SERIES
3/8" NPT

MODEL NO. **00540 - #**

DATE 9/19/2014 SCALE 1:2 SHEET 1 OF 1

MODEL NO. 00540 - #