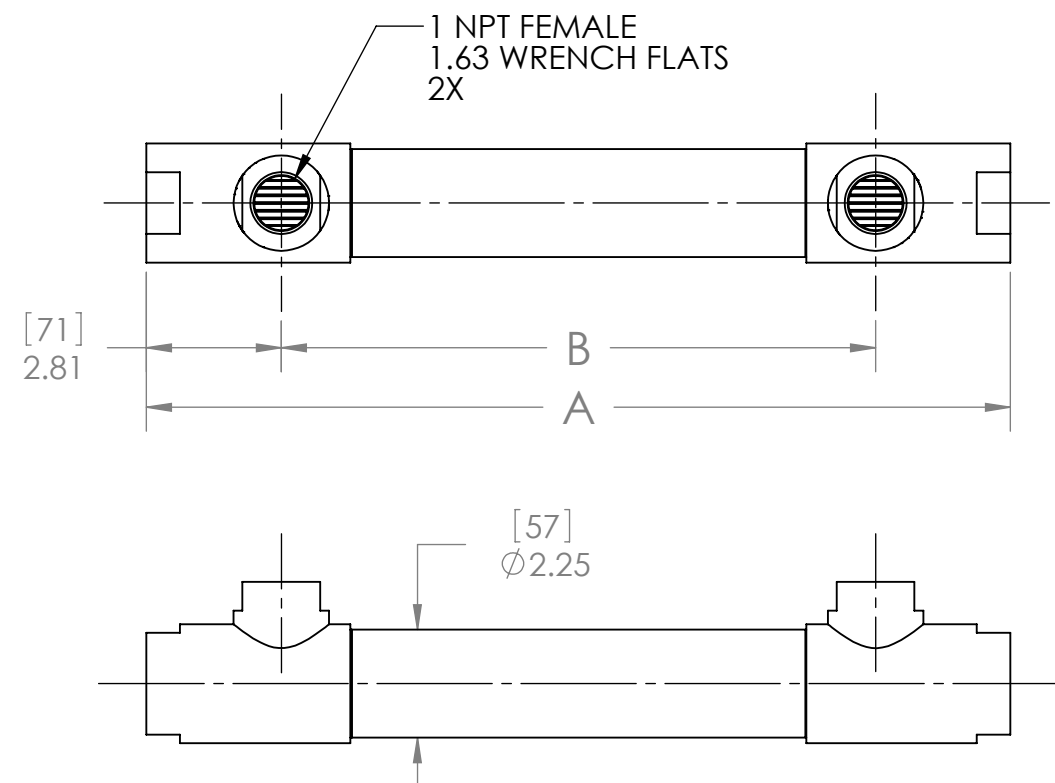
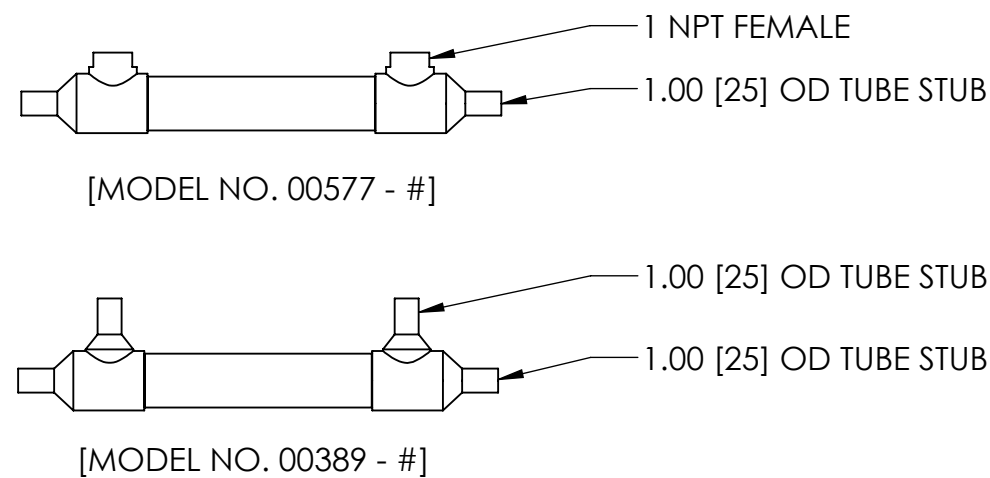


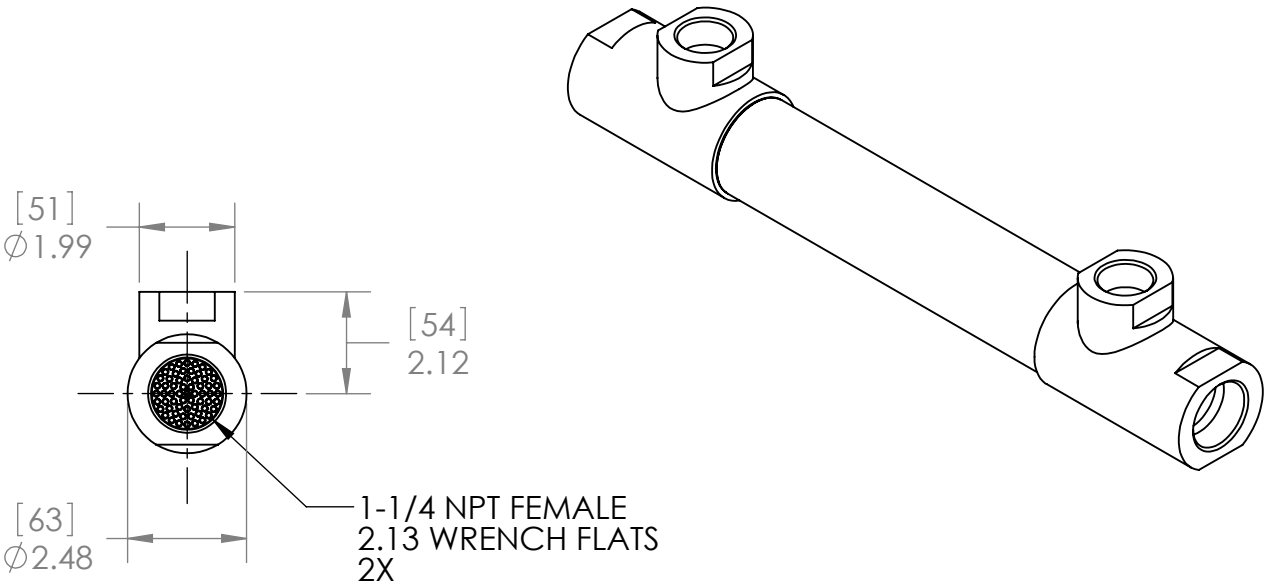
- NOTES:
- 1. MATERIAL: 316L STAINLESS STEEL, NICKEL BRAZED.
 - 2. ALL EXTERNAL SURFACES SATIN FINISH.
 - 3. MAXIMUM OPERATING CONDITIONS:
 - PRESSURE: TUBESIDE - 750 psi (52 bar)
SHELLSIDE - 500 psi (34 bar)
 - TEMPERATURE: 800°F (425°C)
 - PRESSURE FOR STEAM SERVICE: 125 psi (8.6 bar)
 - FLUID TEMPERATURE DIFFERENCE:
 $(T_{HOT})_{AVE} - (T_{COLD})_{AVE} \leq 125^{\circ}F (70^{\circ}C)$



ALSO AVAILABLE



| - # | TUBE COUNT | TUBE LENGTH | | DIM A | | DIM B | | WEIGHT EMPTY | | TRANSFER AREA | |
|------|------------|-------------|------|-------|------|-------|-----|--------------|------|---------------|------|
| | | in | mm | in | mm | in | mm | lb | kg | ft² | m² |
| - 01 | 127 | 10.00 | 254 | 13.00 | 330 | 7.38 | 187 | 7.80 | 3.54 | 3.27 | 0.30 |
| - 02 | | 15.00 | 381 | 18.00 | 457 | 12.38 | 314 | 9.00 | 4.08 | 5.00 | 0.46 |
| - 03 | | 20.00 | 508 | 23.00 | 584 | 17.38 | 441 | 10.30 | 4.67 | 6.73 | 0.63 |
| - 04 | 253 | 7.00 | 178 | 10.00 | 254 | 4.38 | 111 | 7.04 | 3.19 | 3.34 | 0.31 |
| - 07 | | 10.00 | 254 | 13.00 | 330 | 7.38 | 187 | 8.50 | 3.86 | 4.89 | 0.45 |
| - 08 | | 15.00 | 381 | 18.00 | 457 | 12.38 | 314 | 9.80 | 4.45 | 7.49 | 0.70 |
| - 09 | | 20.00 | 508 | 23.00 | 584 | 17.38 | 441 | 11.50 | 5.22 | 10.08 | 0.94 |
| - 10 | 127 | 25.00 | 635 | 28.00 | 711 | 22.38 | 568 | 12.93 | 5.87 | 12.67 | 1.18 |
| - 11 | | 30.00 | 762 | 33.00 | 838 | 27.38 | 695 | 14.60 | 6.62 | 15.27 | 1.42 |
| - 12 | | 25.00 | 635 | 28.00 | 711 | 22.38 | 568 | 12.20 | 5.53 | 8.46 | 0.79 |
| - 13 | | 30.00 | 762 | 33.00 | 838 | 27.38 | 695 | 13.60 | 6.17 | 10.19 | 0.95 |
| - 14 | 253 | 40.00 | 1016 | 43.00 | 1092 | 37.38 | 949 | 16.90 | 7.67 | 13.85 | 1.29 |
| - 15 | | 40.00 | 1016 | 43.00 | 1092 | 37.38 | 949 | 17.60 | 7.98 | 20.75 | 1.93 |



ALL DIMENSIONS ARE IN INCHES [mm]

PROPRIETARY AND CONFIDENTIAL

THE INFORMATION CONTAINED IN THIS DOCUMENT IS THE SOLE PROPERTY OF EXERGY, LLC. ANY REPRODUCTION, DISCLOSURE, OR USE, IN PART OR AS A WHOLE, WITHOUT THE WRITTEN PERMISSION OF EXERGY, LLC IS PROHIBITED.

PRODUCT SPECIFICATIONS SUBJECT TO CHANGE WITHOUT NOTICE. MANUFACTURER ASSUMES NO LIABILITY FOR MISUSE OR ABUSE OF PRODUCT. SPECIFIC WARRANTY INFORMATION IS AVAILABLE UPON REQUEST.

THIRD ANGLE PROJECTION

ExERGY
HEAT TRANSFER SOLUTIONS

320 ENDO BLVD.
GARDEN CITY, NY 11530
USA (516)832-9300
www.exergyllc.com

SHELL & TUBE HEAT EXCHANGER
54 SERIES
1-1/4 NPT

MODEL NO. **00486 - #**

DATE **11/8/2017** SCALE **1:4** SHEET **1 OF 1**