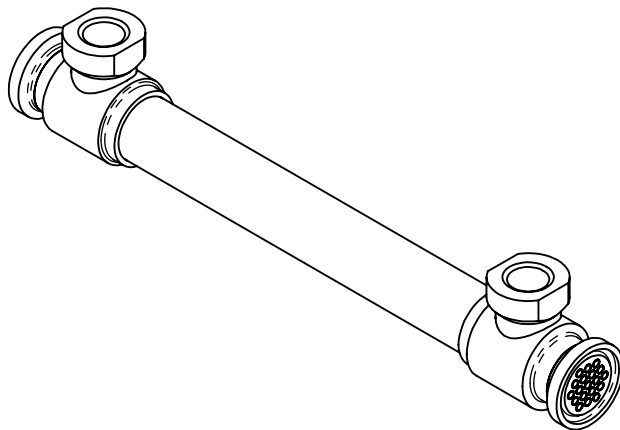
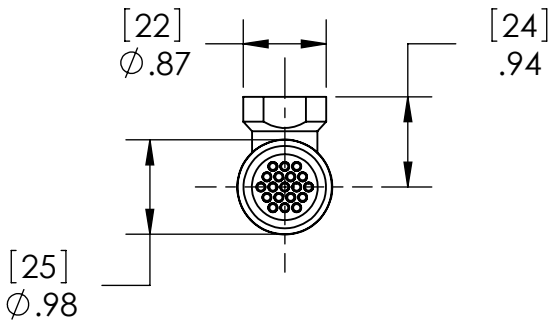
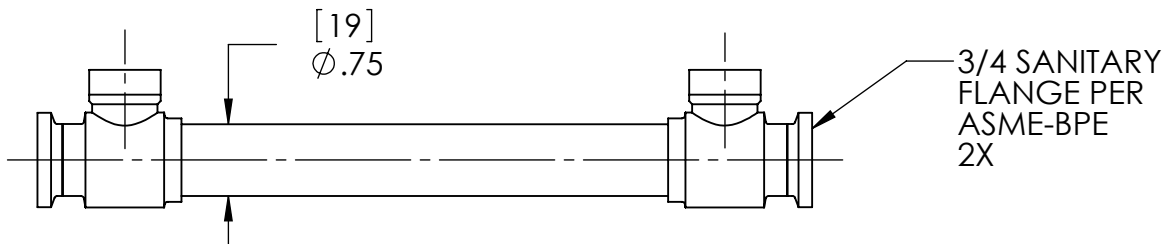
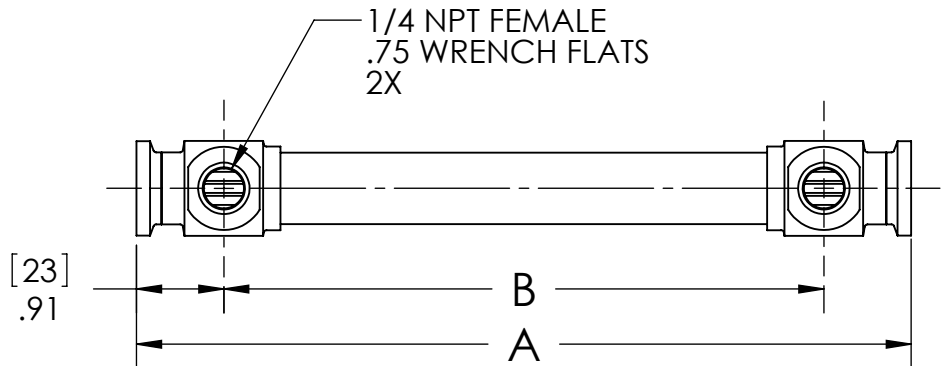
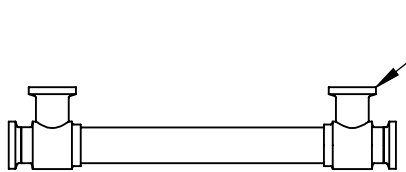


- NOTES:
- 1. MATERIAL: 316L STAINLESS STEEL, NICKEL BRAZED.
 - 2. PRODUCT CONTACT SURFACE FINISH CODE PER ASME-BPE:
SF1: 20 μ in. (.5 μ m) Ra MAX
SF4: 15 μ in. (.4 μ m) Ra MAX, ELECTROPOLISHED.
 - 3. ALL EXTERNAL SURFACES BUFF POLISH FINISH.
 - 4. MAXIMUM OPERATING CONDITIONS:
 - PRESSURE: TUBESIDE - 1,500 psi (103 bar)
SHELLSIDE - 1000 psi (69 bar)
(REFER TO SANITARY CLAMP MANUFACTURER FOR CLAMP PRESSURE RATING)
 - TEMPERATURE: 800°F (425°C)
 - PRESSURE FOR STEAM SERVICE: 125 psi (8.6 bar)
 - FLUID TEMPERATURE DIFFERENCE:
(T_{HOT})_{AVE} - (T_{COLD})_{AVE} <125°F (70°C)
 - 5. FULLY DRAINABLE ON TUBESIDE.
 - 6. MATERIAL AND PROCESS CERTIFICATIONS PROVIDED.

- #	TUBE COUNT	TUBE LENGTH		PRODUCT CONTACT SURFACE FINISH (NOTE 2)	DIM A		DIM B		WEIGHT EMPTY		TRANSFER AREA	
		in	mm		in	mm	in	mm	lb	kg	in²	cm²
- 01	19	4.00	102	SF4	4.07	103	2.25	57	0.46	0.21	20.9	135
- 02		8.00	203		8.07	205	6.25	159	0.63	0.29	43.4	280
- 03		12.00	305		12.07	307	10.25	260	0.81	0.37	65.8	425
- 04		16.00	406		16.07	408	14.25	362	0.98	0.44	88.3	570
- 05		4.00	102	SF1	4.07	103	2.25	57	0.46	0.21	20.9	135
- 06		8.00	203		8.07	205	6.25	159	0.63	0.29	43.4	280
- 07		12.00	305		12.07	307	10.25	260	0.81	0.37	65.8	425
- 08		16.00	406		16.07	408	14.25	362	0.98	0.44	88.3	570
- 09		20.00	508	SF4	20.07	510	18.25	464	1.19	0.54	110.7	714
- 10		25.00	635		25.07	637	23.25	591	1.42	0.64	138.7	895
- 11		30.00	762		30.07	764	28.25	718	1.64	0.75	166.8	1076
- 12		20.00	508	SF1	20.07	510	18.25	464	1.19	0.54	110.7	714
- 13		25.00	635		25.07	637	23.25	591	1.42	0.64	138.7	895
- 14		30.00	762		30.07	764	28.25	718	1.64	0.75	166.8	1076



ALSO AVAILABLE



- DOUBLE TUBESHEET VERSIONS:
- MODEL 01708 - # (1/4 NPT SHELL PORT)
 - MODEL 01709 - # (3/4 SANITARY FLANGE SHELL PORT)
- MOUNTING KIT:
- MODEL 01021-03

ALL DIMENSIONS ARE IN INCHES [mm]

PROPRIETARY AND CONFIDENTIAL THE INFORMATION CONTAINED IN THIS DOCUMENT IS THE SOLE PROPERTY OF EXERGY, LLC. ANY REPRODUCTION, DISCLOSURE, OR USE, IN PART OR AS A WHOLE, WITHOUT THE WRITTEN PERMISSION OF EXERGY, LLC IS PROHIBITED.		ExERGY HEAT TRANSFER SOLUTIONS		320 ENDO BLVD. GARDEN CITY, NY 11530 USA (516)832-9300 www.exergyllc.com			
PRODUCT SPECIFICATIONS SUBJECT TO CHANGE WITHOUT NOTICE. MANUFACTURER ASSUMES NO LIABILITY FOR MISUSE OR ABUSE OF PRODUCT. SPECIFIC WARRANTY INFORMATION IS AVAILABLE UPON REQUEST.		SHELL & TUBE HEAT EXCHANGER 17 SERIES SHELL PORT NPT					
THIRD ANGLE PROJECTION		MODEL NO. 00402 - #					
		DATE 9/19/2014	SCALE 1:2	SHEET 1 OF 1			