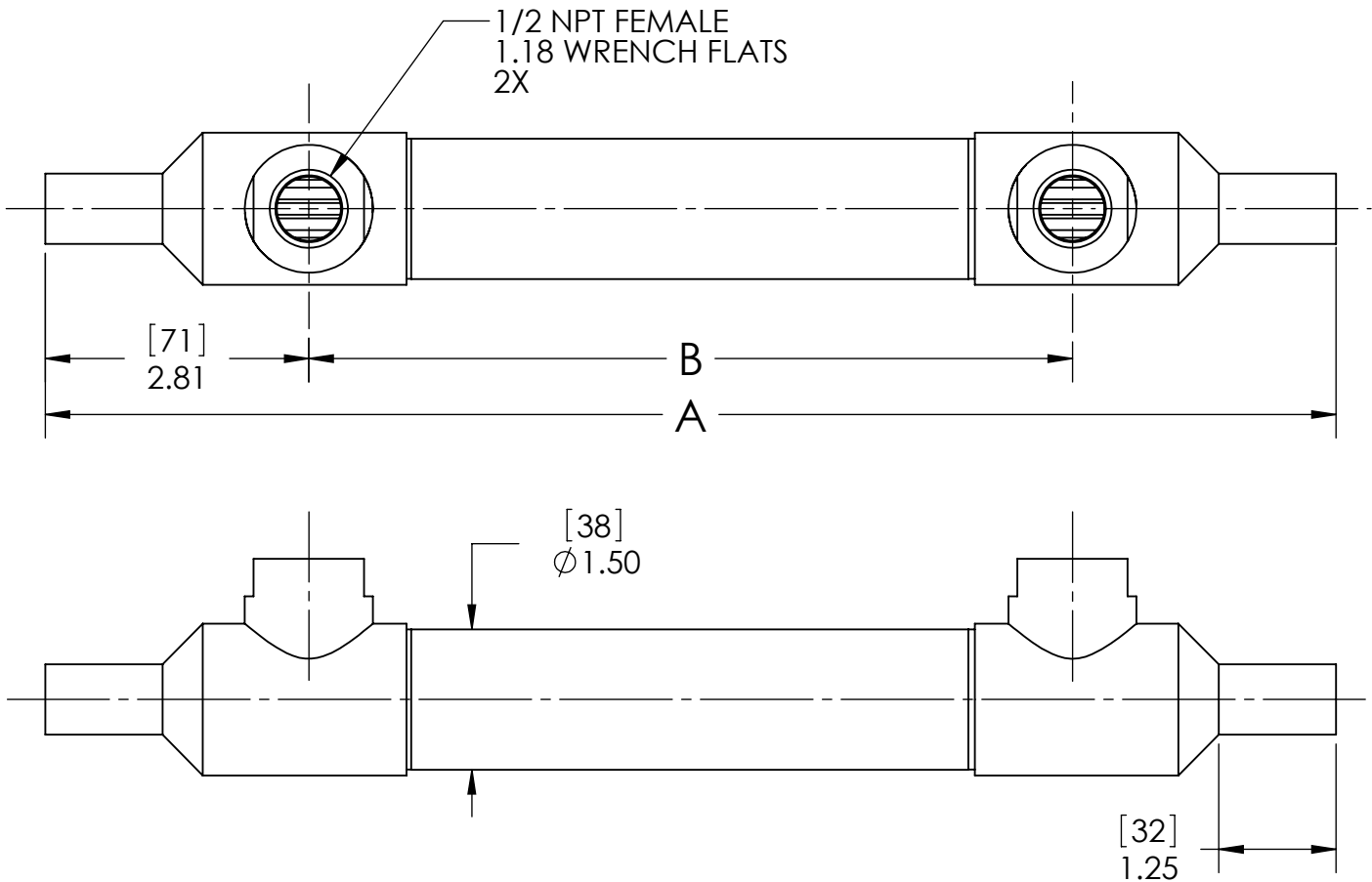
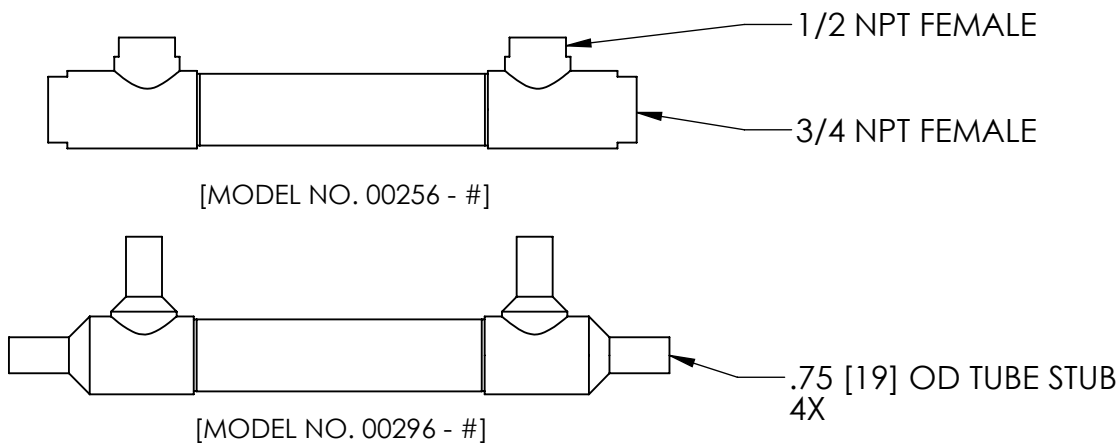


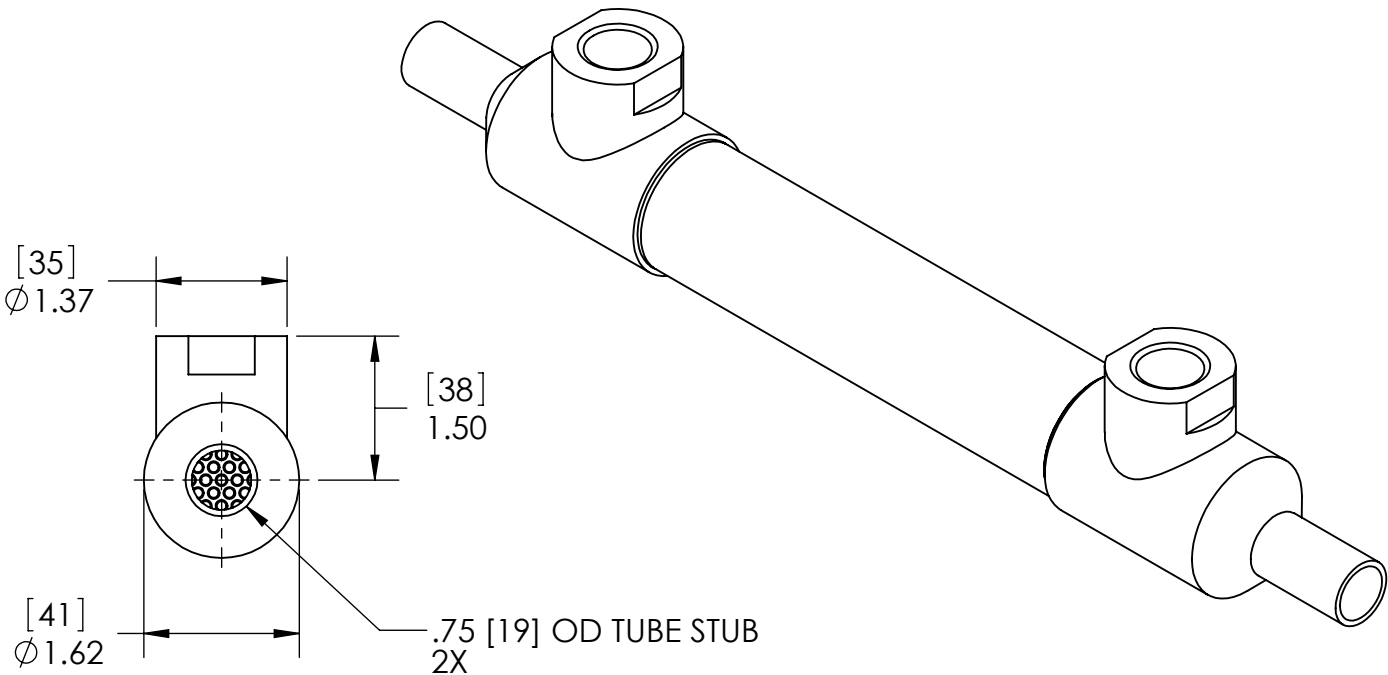
- NOTES:
1. MATERIAL: 316L STAINLESS STEEL, NICKEL BRAZED.
 2. ALL EXTERNAL SURFACES SATIN FINISH. SURFACE FINISH ON TUBESIDE WETTED SURFACES IS 20 Ra MAX FOR ELECTROPOLISHED VERSIONS. 32 Ra MAX OTHERWISE.
 3. MAXIMUM OPERATING CONDITIONS:
 - PRESSURE: TUBESIDE - 1,200 psi (83 bar)
SHELLSIDE - 800 psi (55 bar)
 - TEMPERATURE: 800°F (425°C)
 - PRESSURE FOR STEAM SERVICE: 125 psi (8.6 bar)
 - FLUID TEMPERATURE DIFFERENCE:
 $(T_{HOT})_{AVE} - (T_{COLD})_{AVE} \leq 125^{\circ}F$ (70°C)



ALSO AVAILABLE



- #	TUBE COUNT	EP	TUBE LENGTH		DIM A		DIM B		WEIGHT EMPTY		TRANSFER AREA	
			in	mm	in	mm	in	mm	lb	kg	ft²	m²
- 01	55		20.00	508	23.75	603	18.13	461	4.60	2.09	2.93	0.27
- 02			15.00	381	18.75	476	13.13	334	3.80	1.72	2.18	0.20
- 03			10.00	254	13.75	349	8.13	207	3.10	1.41	1.43	0.13
- 04	91		10.00	254	13.75	349	8.13	207	3.10	1.41	1.78	0.17
- 09		•										
- 05			15.00	381	18.75	476	13.13	334	3.80	1.72	2.71	0.25
- 10		•										
- 06			20.00	508	23.75	603	18.13	461	4.60	2.09	3.65	0.34
- 11		•										
- 12	55		25.00	635	28.75	730	23.13	588	5.47	2.48	3.68	0.34
- 13			30.00	762	33.75	857	28.13	715	6.25	2.83	4.43	0.41
- 14	91		25.00	635	28.75	730	23.13	588	5.47	2.48	4.58	0.43
- 15			30.00	762	33.75	857	28.13	715	6.25	2.83	5.21	0.48



ALL DIMENSIONS ARE IN INCHES [mm]

PROPRIETARY AND CONFIDENTIAL

THE INFORMATION CONTAINED IN THIS DOCUMENT IS THE SOLE PROPERTY OF EXERGY, LLC. ANY REPRODUCTION, DISCLOSURE, OR USE, IN PART OR AS A WHOLE, WITHOUT THE WRITTEN PERMISSION OF EXERGY, LLC IS PROHIBITED.

PRODUCT SPECIFICATIONS SUBJECT TO CHANGE WITHOUT NOTICE. MANUFACTURER ASSUMES NO LIABILITY FOR MISUSE OR ABUSE OF PRODUCT. SPECIFIC WARRANTY INFORMATION IS AVAILABLE UPON REQUEST.

THIRD ANGLE PROJECTION

ExERGY
HEAT TRANSFER SOLUTIONS

320 ENDO BLVD.
GARDEN CITY, NY 11530
USA (516)832-9300
www.exergyllc.com

SHELL & TUBE HEAT EXCHANGER
35 SERIES
TUBE SIDE TUBE STUB

MODEL NO. **00320 - #**

DATE 10/17/2014 SCALE 1:2 SHEET 1 OF 1