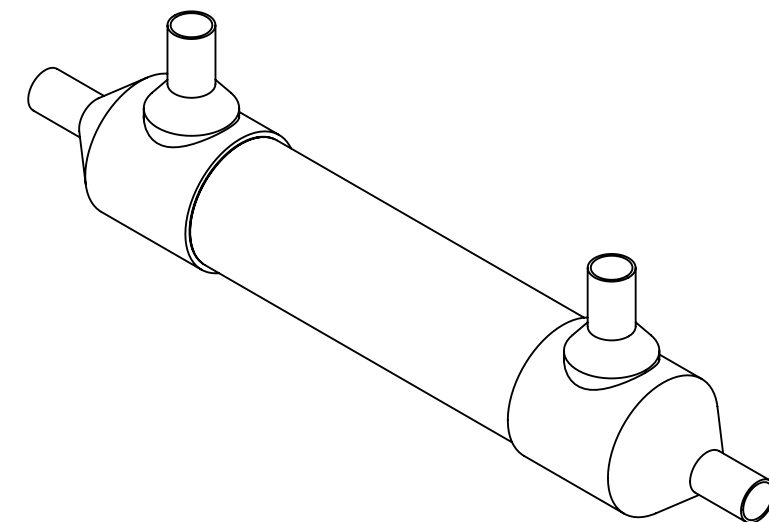
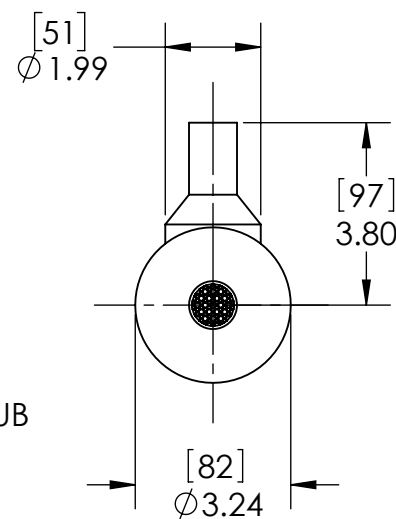
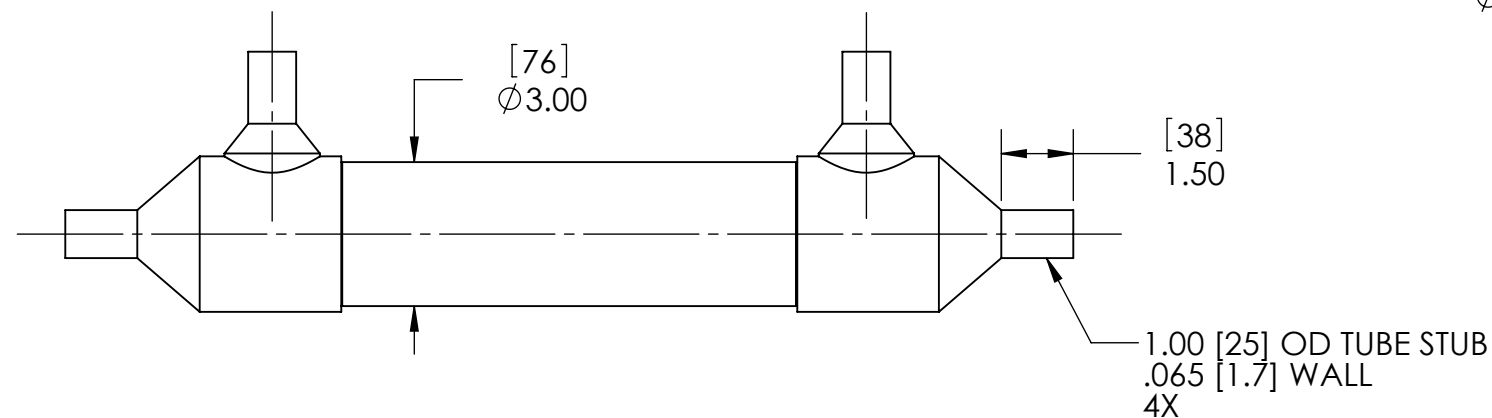
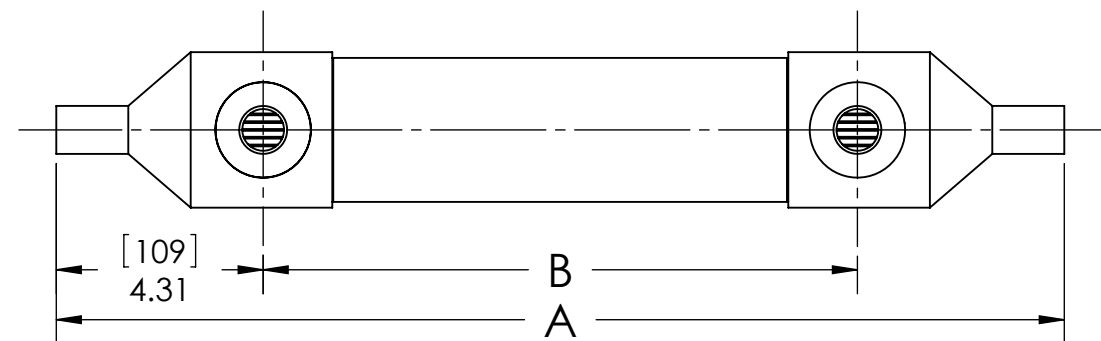


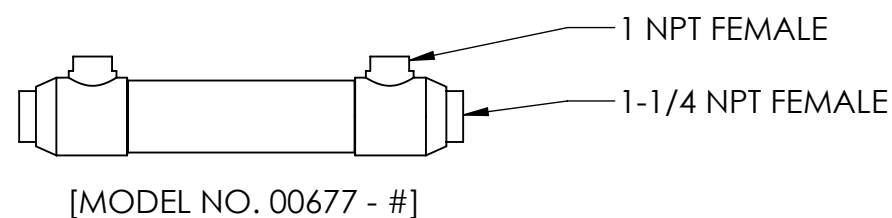
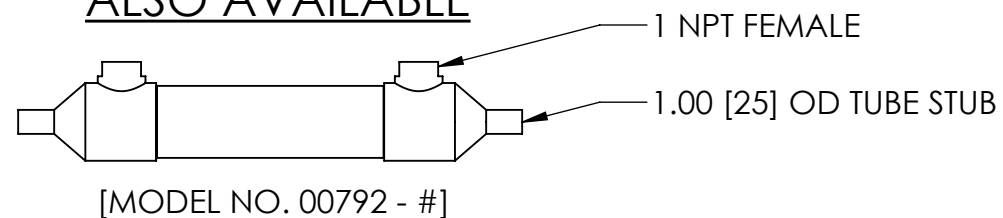
NOTES:

1. MATERIAL: 316L STAINLESS STEEL, NICKEL BRAZED.
2. ALL EXTERNAL SURFACES SATIN FINISH.
3. MAXIMUM OPERATING CONDITIONS:
  - PRESSURE: TUBESIDE - 700 psi (48 bar)  
SHELLSIDE - 400 psi (28 bar)
  - TEMPERATURE: 800°F (425°C)
  - PRESSURE FOR STEAM SERVICE: 125 psi (8.6 bar)
  - FLUID TEMPERATURE DIFFERENCE:  
 $(T_{HOT})_{AVE} - (T_{COLD})_{AVE} \leq 125^{\circ}F (70^{\circ}C)$

- #	TUBE COUNT	TUBE LENGTH		DIM A		DIM B		WEIGHT EMPTY		TRANSFER AREA	
		in	mm	in	mm	in	mm	lb	kg	ft <sup>2</sup>	m <sup>2</sup>
-01	253	10.00	254	16.00	406	7.38	187	11.20	5.08	6.50	0.60
-02		15.00	381	21.00	533	12.38	314	13.60	6.17	9.95	0.92
-03		20.00	508	26.00	660	17.38	441	16.10	7.30	13.40	1.25
-04		25.00	635	31.00	787	22.38	568	18.96	8.60	16.85	1.57
-05		30.00	762	36.00	914	27.38	695	21.47	9.74	20.30	1.89
-06		40.00	1016	46.00	1168	37.38	949	26.84	12.17	27.20	2.53



ALSO AVAILABLE



ALL DIMENSIONS ARE IN INCHES [mm]

**PROPRIETARY AND CONFIDENTIAL**  
THE INFORMATION CONTAINED IN THIS DOCUMENT IS THE SOLE PROPERTY OF EXERGY, LLC. ANY REPRODUCTION, DISCLOSURE, OR USE, IN PART OR AS A WHOLE, WITHOUT THE WRITTEN PERMISSION OF EXERGY, LLC IS PROHIBITED.

PRODUCT SPECIFICATIONS SUBJECT TO CHANGE WITHOUT NOTICE. MANUFACTURER ASSUMES NO LIABILITY FOR MISUSE OR ABUSE OF PRODUCT. SPECIFIC WARRANTY INFORMATION IS AVAILABLE UPON REQUEST.

THIRD ANGLE PROJECTION



**EXERGY**  
HEAT TRANSFER SOLUTIONS  
320 ENDO BLVD.  
GARDEN CITY, NY 11530  
USA (516)832-9300  
www.exergyllc.com

SHELL & TUBE HEAT EXCHANGER  
73 SERIES  
TUBE STUB

MODEL NO. 05080 - #  
DATE 12/9/2022 SCALE 1:4 SHEET 1 OF 1

MODEL NO.

05080 - #