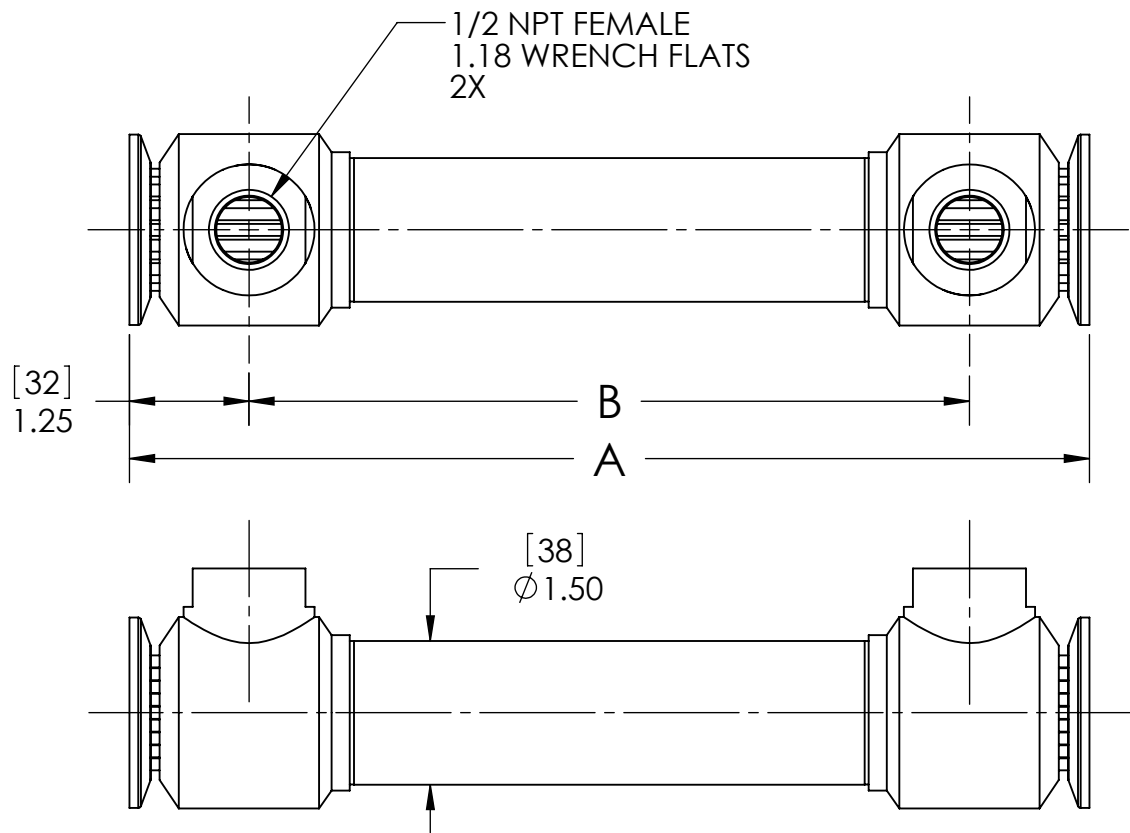
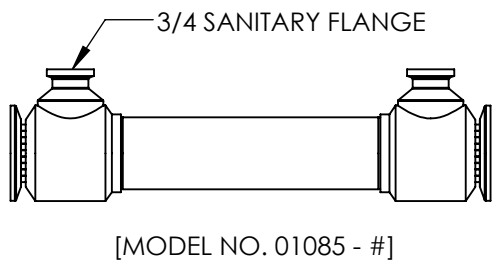


- NOTES:
- MATERIAL: 316L STAINLESS STEEL, NICKEL BRAZED.
  - PRODUCT CONTACT SURFACE FINISH CODE PER ASME-BPE:  
SF1: 20 µin. (.5 µm) Ra MAX  
SF4: 15 µin. (.4 µm) Ra MAX, ELECTROPOLISHED.
  - ALL EXTERNAL SURFACES SATIN FINISH.
  - MAXIMUM OPERATING CONDITIONS:
    - PRESSURE: TUBESIDE - 1,200 psi (83 bar)  
SHELLSIDE - 800 psi (55 bar)  
(REFER TO SANITARY CLAMP MANUFACTURER  
FOR CLAMP PRESSURE RATING)
    - TEMPERATURE: 800°F (425°C)
    - PRESSURE FOR STEAM SERVICE: 125 psi (8.6 bar)
    - FLUID TEMPERATURE DIFFERENCE:  
 $(T_{HOT})_{AVE} - (T_{COLD})_{AVE} < 125^{\circ}F (70^{\circ}C)$
  - FULLY DRAINABLE ON TUBESIDE.
  - MATERIAL AND PROCESS CERTIFICATIONS PROVIDED.



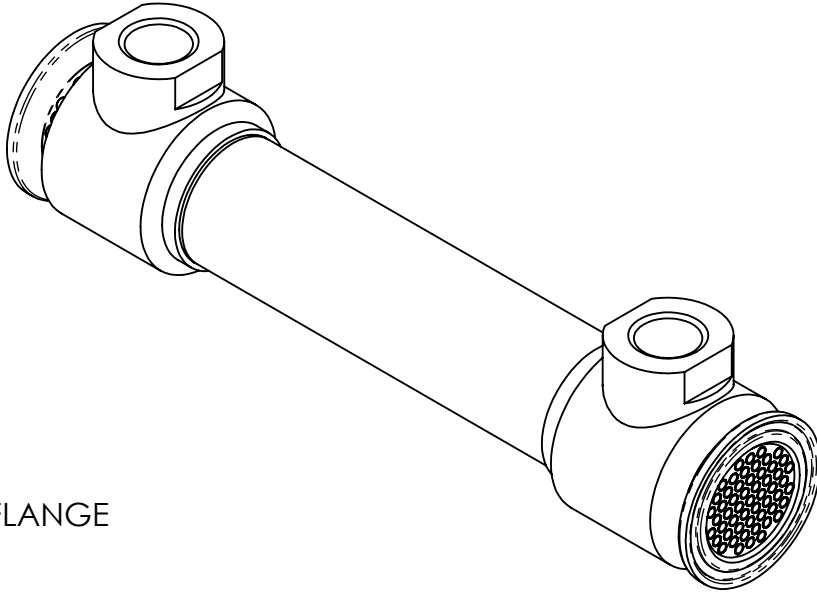
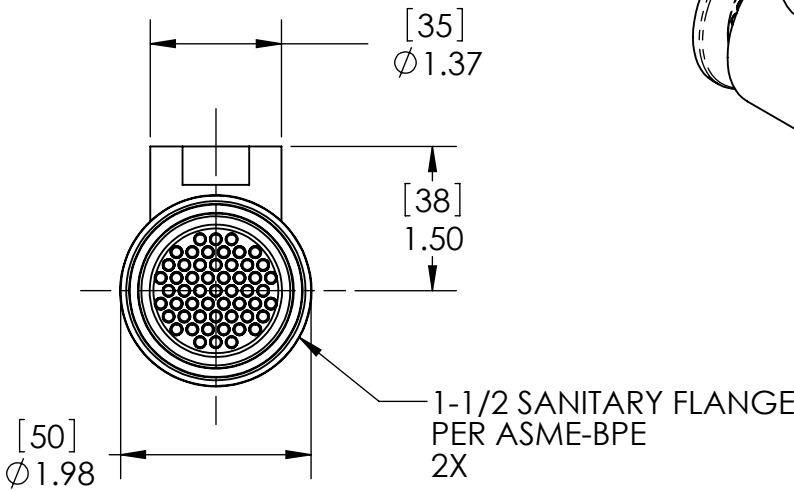
ALSO AVAILABLE



MOUNTING KIT:

- MODEL 00421-03

- #	TUBE COUNT	TUBE LENGTH		PRODUCT CONTACT SURFACE FINISH (NOTE 2)	DIM A		DIM B		WEIGHT EMPTY		TRANSFER AREA	
		in	mm		in	mm	in	mm	lb	kg	ft²	m²
- 01	55	10.00	254	SF4	10.00	254	7.50	191	3.37	1.5	1.33	0.12
- 02		15.00	381		15.00	381	12.50	318	4.78	2.2	2.08	0.19
- 03		20.00	508		20.00	508	17.50	445	5.72	2.6	2.83	0.26
- 04		10.00	254	SF1	10.00	254	7.50	191	3.37	1.5	1.33	0.12
- 05		15.00	381		15.00	381	12.50	318	4.78	2.2	2.08	0.19
- 06		20.00	508		20.00	508	17.50	445	5.72	2.6	2.83	0.26
-13	91	10.00	254	SF4	10.00	254	7.50	191	3.37	1.5	1.66	0.15
-14		15.00	381		15.00	381	12.50	318	4.78	2.2	2.59	0.24
-15		20.00	508		20.00	508	17.50	445	5.72	2.6	3.52	0.33
-16		10.00	254	SF1	10.00	254	7.50	191	3.37	1.5	1.66	0.15
-17		15.00	381		15.00	381	12.50	318	4.78	2.2	2.59	0.24
-18		20.00	508		20.00	508	17.50	445	5.72	2.6	3.52	0.33
-19	55	25.00	635	SF4	25.00	635	22.50	572	6.50	2.9	3.58	0.33
-20		30.00	762		30.00	762	27.50	699	7.28	3.3	4.33	0.40
-21		25.00	635	SF1	25.00	635	22.50	572	6.50	2.9	3.58	0.33
-22		30.00	762		30.00	762	27.50	699	7.28	3.3	4.33	0.40
-23	91	25.00	635	SF4	25.00	635	22.50	572	6.50	2.9	4.46	0.41
-24		30.00	762		30.00	762	27.50	699	7.28	3.3	5.39	0.50
-25		25.00	635	SF1	25.00	635	22.50	572	6.50	2.9	4.46	0.41
-26		30.00	762		30.00	762	27.50	699	7.28	3.3	5.39	0.50



ALL DIMENSIONS ARE IN INCHES [mm]

**PROPRIETARY AND CONFIDENTIAL**

THE INFORMATION CONTAINED IN THIS DOCUMENT IS THE SOLE PROPERTY OF EXERGY, LLC. ANY REPRODUCTION, DISCLOSURE, OR USE, IN PART OR AS A WHOLE, WITHOUT THE WRITTEN PERMISSION OF EXERGY, LLC IS PROHIBITED.

PRODUCT SPECIFICATIONS SUBJECT TO CHANGE WITHOUT NOTICE. MANUFACTURER ASSUMES NO LIABILITY FOR MISUSE OR ABUSE OF PRODUCT. SPECIFIC WARRANTY INFORMATION IS AVAILABLE UPON REQUEST.

**THIRD ANGLE PROJECTION**

**ExERGY**  
HEAT TRANSFER SOLUTIONS

320 ENDO BLVD.  
GARDEN CITY, NY 11530  
USA (516)832-9300  
www.exergyllc.com

**SHELL & TUBE HEAT EXCHANGER  
35 SERIES SANITARY  
DOUBLE TUBESHEET, 1/2 NPT**

MODEL NO. **01095 - #**

DATE **9/23/2014** SCALE **1:2** SHEET **1 OF 1**

MODEL NO. 01095 - #