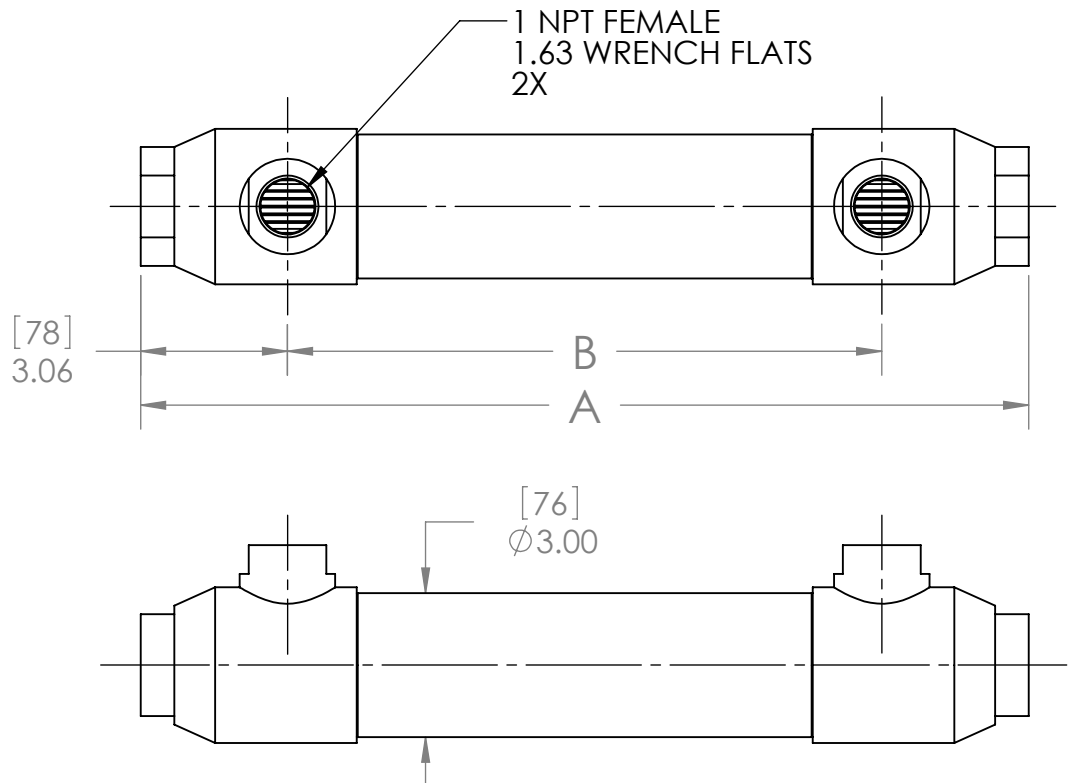
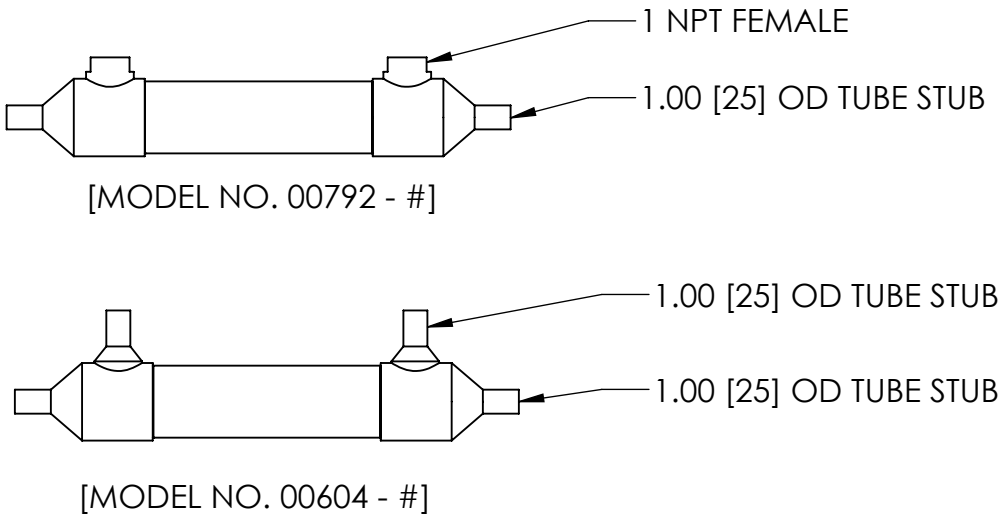


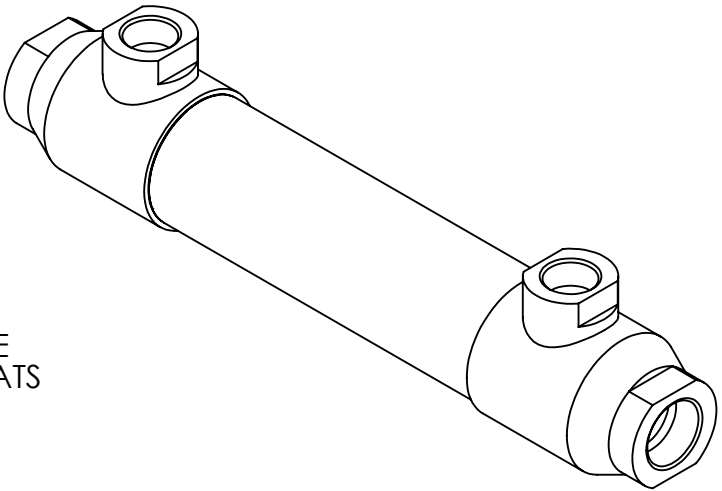
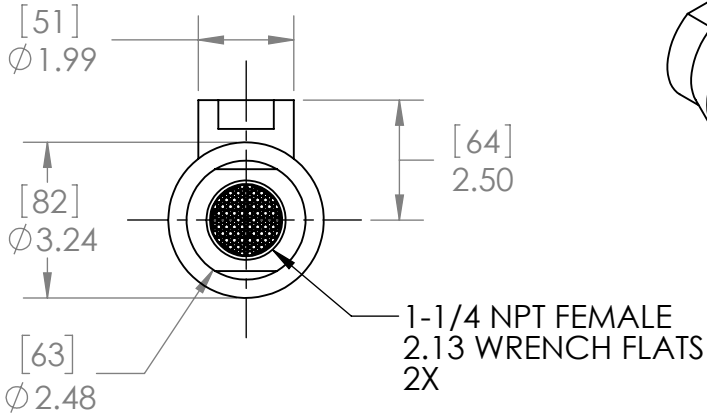
- NOTES:
- 1. MATERIAL: 316L STAINLESS STEEL, NICKEL BRAZED.
 - 2. ALL EXTERNAL SURFACES SATIN FINISH.
 - 3. MAXIMUM OPERATING CONDITIONS:
 - PRESSURE: TUBESIDE - 700 psi (48 bar)
SHELLSIDE - 400 psi (28 bar)
 - TEMPERATURE: 800°F (425°C)
 - PRESSURE FOR STEAM SERVICE: 125 psi (8.6 bar)
 - FLUID TEMPERATURE DIFFERENCE:
 $(T_{HOT})_{AVE} - (T_{COLD})_{AVE} \leq 125^{\circ}F (70^{\circ}C)$



ALSO AVAILABLE



- #	TUBE COUNT	TUBE LENGTH		DIM A		DIM B		WEIGHT EMPTY		TRANSFER AREA	
		in	mm	in	mm	in	mm	lb	kg	ft²	m²
-01	253	10.00	254	13.50	343	7.38	187	11.42	5.18	6.51	0.60
-02		15.00	381	18.50	470	12.38	314	13.94	6.32	9.96	0.93
-03		20.00	508	23.50	597	17.38	441	16.45	7.46	13.41	1.25
-04	365	30.00	762	33.50	851	27.38	695	20.31	9.21	22.03	2.05
-05		25.00	635	28.50	724	22.38	568	18.26	8.28	18.29	1.70
-06		10.00	254	13.50	343	7.38	187	11.20	5.08	7.06	0.66
-07		15.00	381	18.50	470	12.38	314	13.55	6.15	10.80	1.00
-08	253	20.00	508	23.50	597	17.38	441	15.90	7.21	14.54	1.35
-09		30.00	762	33.50	851	27.38	695	21.47	9.74	20.30	1.89
-10		25.00	635	28.50	724	22.38	568	18.96	8.60	16.85	1.57
-11		40.00	1016	43.50	1105	37.38	949	26.49	12.02	27.59	2.56
-12	253	17.50	445	21.00	533	14.88	378	15.45	7.01	12.07	1.12



ALL DIMENSIONS ARE IN INCHES [mm]

PROPRIETARY AND CONFIDENTIAL
THE INFORMATION CONTAINED IN THIS DOCUMENT IS THE SOLE PROPERTY OF EXERGY, LLC. ANY REPRODUCTION, DISCLOSURE, OR USE, IN PART OR AS A WHOLE, WITHOUT THE WRITTEN PERMISSION OF EXERGY, LLC IS PROHIBITED.

PRODUCT SPECIFICATIONS SUBJECT TO CHANGE WITHOUT NOTICE. MANUFACTURER ASSUMES NO LIABILITY FOR MISUSE OR ABUSE OF PRODUCT. SPECIFIC WARRANTY INFORMATION IS AVAILABLE UPON REQUEST.

THIRD ANGLE
PROJECTION



EXERGY
HEAT TRANSFER SOLUTIONS

320 ENDO BLVD.
GARDEN CITY, NY 11530
USA (516)832-9300
www.exergyllc.com

SHELL & TUBE HEAT EXCHANGER
73 SERIES
1-1/4 NPT

MODEL NO. **00677 - #**

DATE 01-22-2019 SCALE 1:4 SHEET 1 OF 1