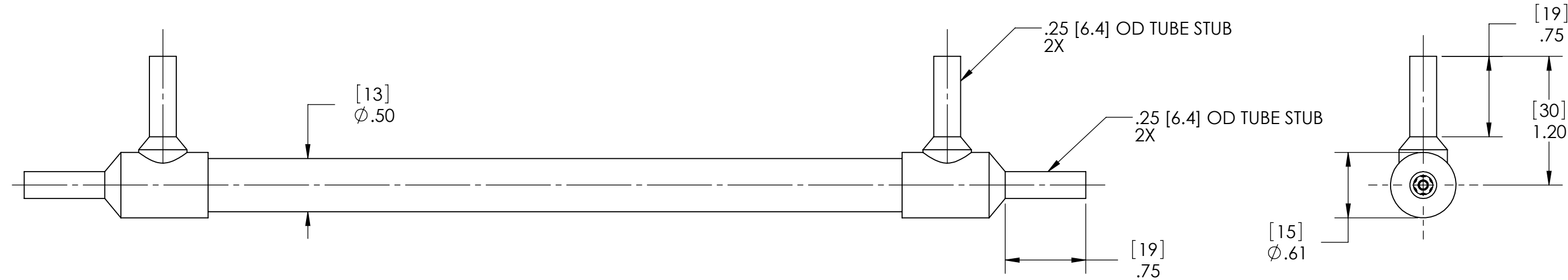
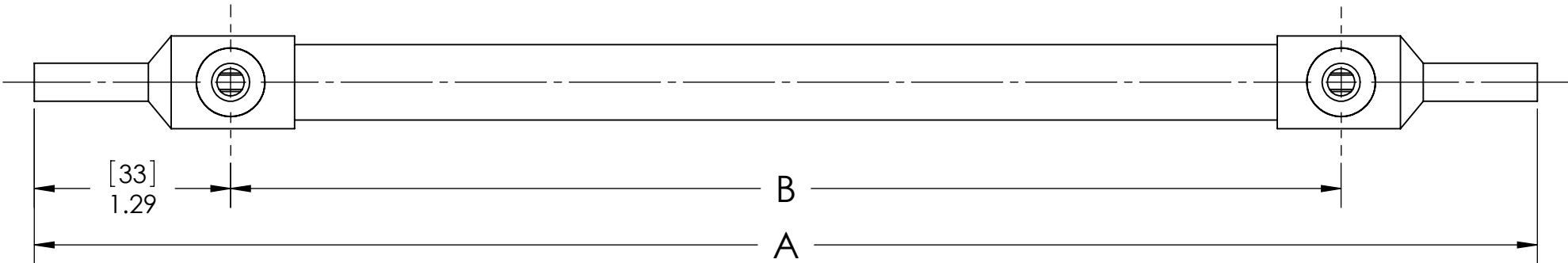
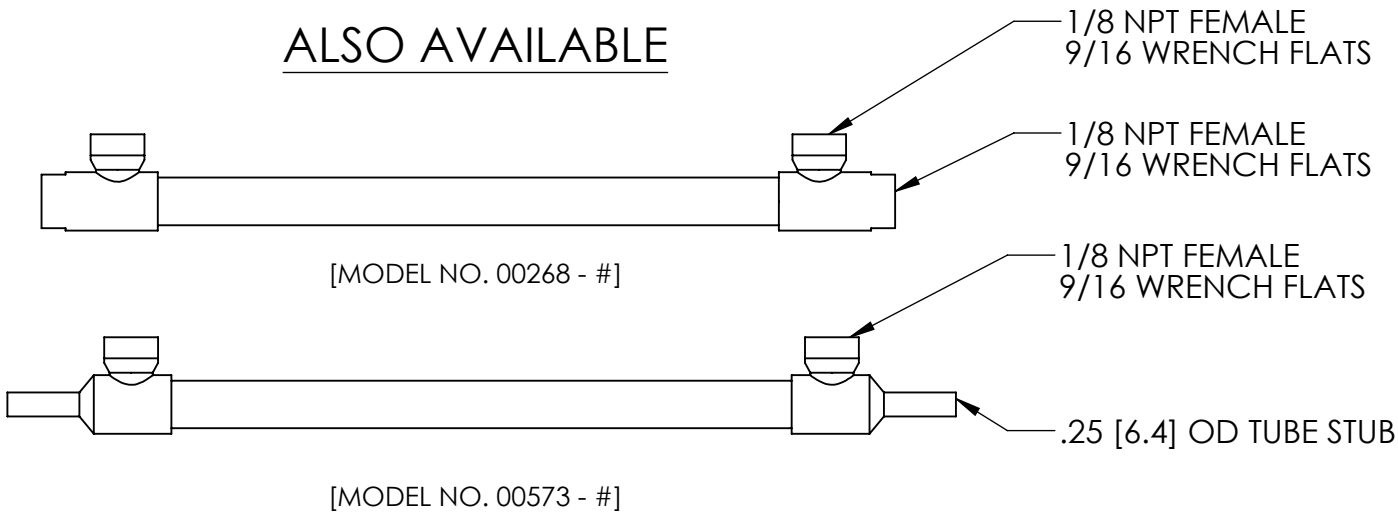


- NOTES:
1. MATERIAL: 316L STAINLESS STEEL, NICKEL BRAZED.
 2. ALL EXTERNAL SURFACES BUFF POLISH FINISH.
 3. MAXIMUM OPERATING CONDITIONS:
 - PRESSURE: TUBESIDE - 1500 psi (103 bar)
SHELLSIDE - 1000 psi (69 bar)
 - TEMPERATURE: 800°F (425°C)
 - PRESSURE FOR STEAM SERVICE: 125 psi (8.6 bar)
 - FLUID TEMPERATURE DIFFERENCE:
 $(T_{HOT})_{AVE} - (T_{COLD})_{AVE} \leq 125^{\circ}F (70^{\circ}C)$

- #	TUBE COUNT	TUBE LENGTH		DIM A		DIM B		WEIGHT EMPTY		TRANSFER AREA	
		in	mm	in	mm	in	mm	lb	kg	in²	cm²
- 01	7	4.00	102	5.88	149	3.32	84	0.23	0.10	7.84	51
- 02		8.00	203	9.88	251	7.32	186	0.33	0.15	16.10	104
- 03		12.00	305	13.88	353	11.32	288	0.43	0.20	24.37	157



ALSO AVAILABLE



ALL DIMENSIONS ARE IN INCHES [mm]

PROPRIETARY AND CONFIDENTIAL THE INFORMATION CONTAINED IN THIS DOCUMENT IS THE SOLE PROPERTY OF EXERGY, LLC. ANY REPRODUCTION, DISCLOSURE, OR USE, IN PART OR AS A WHOLE, WITHOUT THE WRITTEN PERMISSION OF EXERGY, LLC IS PROHIBITED.		ExERGY HEAT TRANSFER SOLUTIONS		320 ENDO BLVD. GARDEN CITY, NY 11530 USA (516)832-9300 www.exergyllc.com	
PRODUCT SPECIFICATIONS SUBJECT TO CHANGE WITHOUT NOTICE. MANUFACTURER ASSUMES NO LIABILITY FOR MISUSE OR ABUSE OF PRODUCT. SPECIFIC WARRANTY INFORMATION IS AVAILABLE UPON REQUEST.		SHELL & TUBE HEAT EXCHANGER 10 SERIES TUBE STUBS			
THIRD ANGLE PROJECTION		MODEL NO. 00527 - #			
		DATE 9/19/2014	SCALE 1:1	SHEET 1 OF 1	