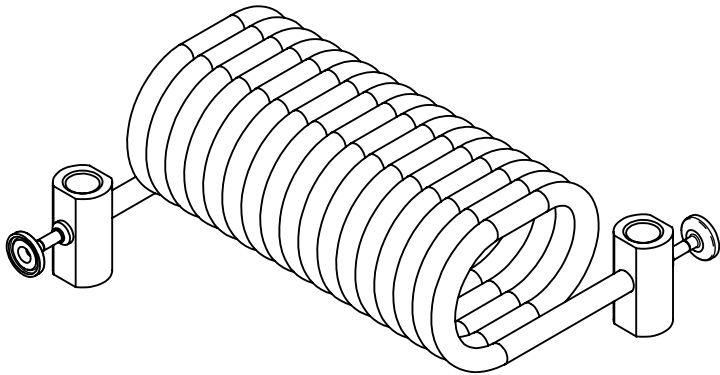
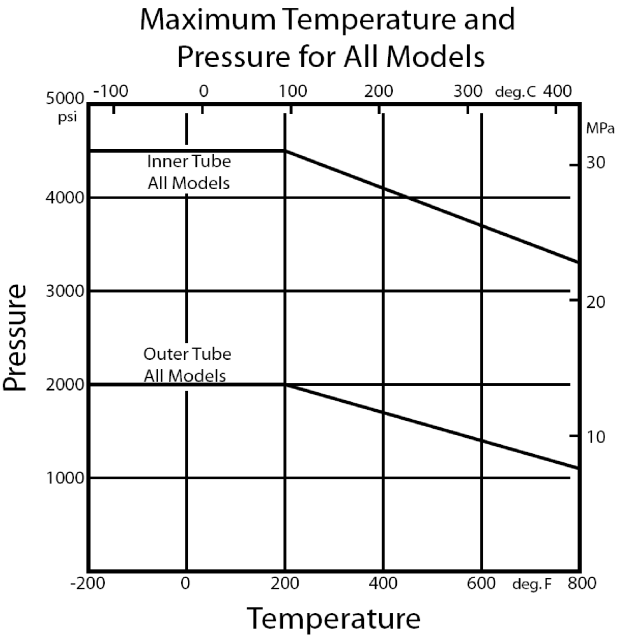
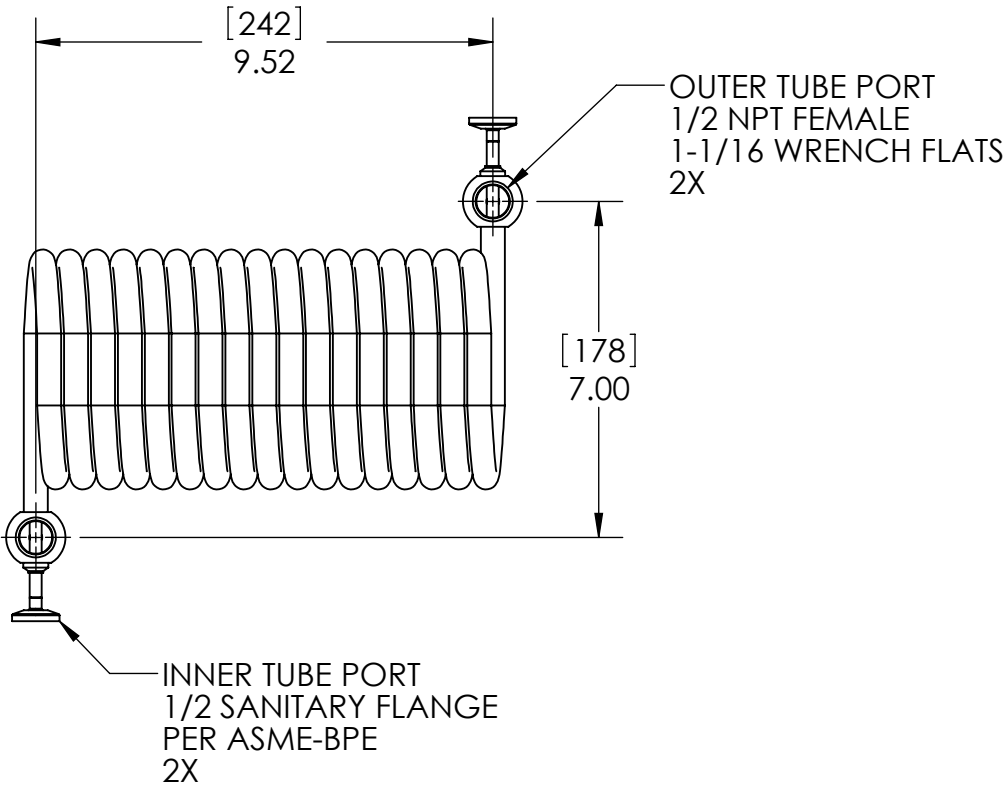
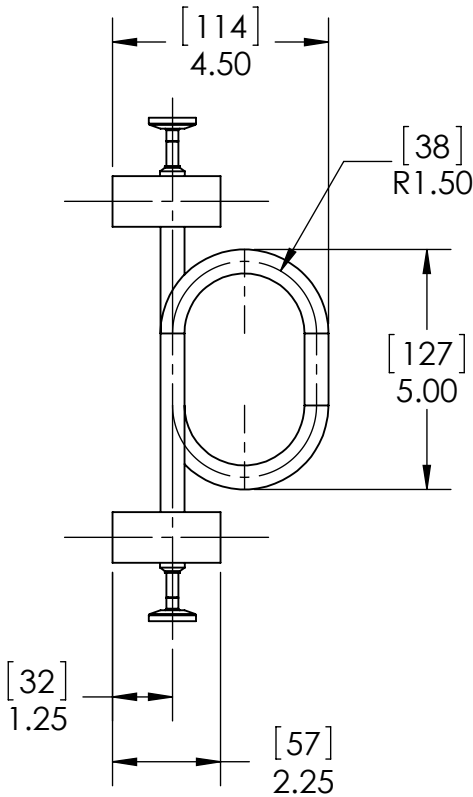
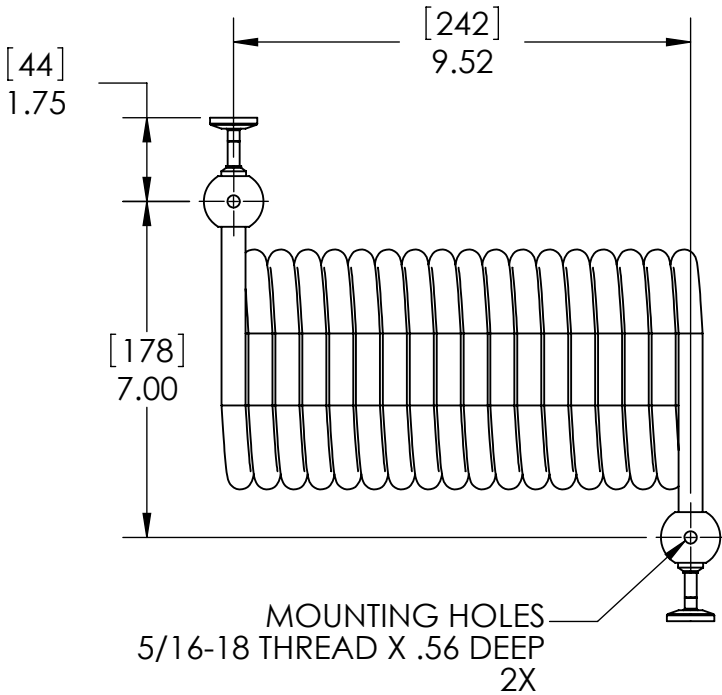


- NOTES:
- MATERIAL: 316L STAINLESS STEEL.
    - INNER TUBE: .250 OD X .035 WALL.
    - OUTER TUBE: .500 OD X .035 WALL.
  - SEE CHART FOR MAXIMUM PRESSURE AND TEMPERATURES. SANITARY CLAMPS MAY LIMIT MAXIMUM PRESSURE. GASKET MAY LIMIT MAXIMUM TEMPERATURE. CONSULT THE MANUFACTURER'S LITERATURE.
  - FULLY DRAINABLE ON INNER TUBE SIDE WHEN MOUNTED WITH COIL AXIS IN VERTICAL ORIENTATION.
  - MATERIAL AND PROCESS CERTIFICATIONS PROVIDED.

| - # | # OF COIL | EP | WEIGHT EMPTY |     | TRANSFER AREA |     |
|-----|-----------|----|--------------|-----|---------------|-----|
|     |           |    | lb           | kg  | ft²           | m²  |
| -01 | 17        | ●  | 5.9          | 2.7 | 1.2           | .11 |
| -02 |           |    | 5.9          | 2.7 | 1.2           | .11 |



ALL DIMENSIONS ARE IN INCHES [mm]

|  |  |   |                        |
|--|--|---|------------------------|
| <b>PROPRIETARY AND CONFIDENTIAL</b><br>THE INFORMATION CONTAINED IN THIS DOCUMENT IS THE SOLE PROPERTY OF EXERGY, LLC. ANY REPRODUCTION, DISCLOSURE, OR USE, IN PART OR AS A WHOLE, WITHOUT THE WRITTEN PERMISSION OF EXERGY, LLC IS PROHIBITED. |  | <b>ExERGY</b><br>HEAT TRANSFER SOLUTIONS<br>320 ENDO BLVD.<br>GARDEN CITY, NY 11530<br>USA (516)832-9300<br>www.exergyllc.com |                        |
| PRODUCT SPECIFICATIONS SUBJECT TO CHANGE WITHOUT NOTICE. MANUFACTURER ASSUMES NO LIABILITY FOR MISUSE OR ABUSE OF PRODUCT. SPECIFIC WARRANTY INFORMATION IS AVAILABLE UPON REQUEST.  |  | TUBE IN TUBE HEAT EXCHANGER<br>1/2 OUTER TUBE X 1/4 INNER TUBE<br>SANITARY FLANGES  |                        |
| THIRD ANGLE PROJECTION   |  | MODEL NO. 00459 - #   |                        |
|  |  | DATE 9/19/2014  | SCALE 1:4 SHEET 1 OF 1 |