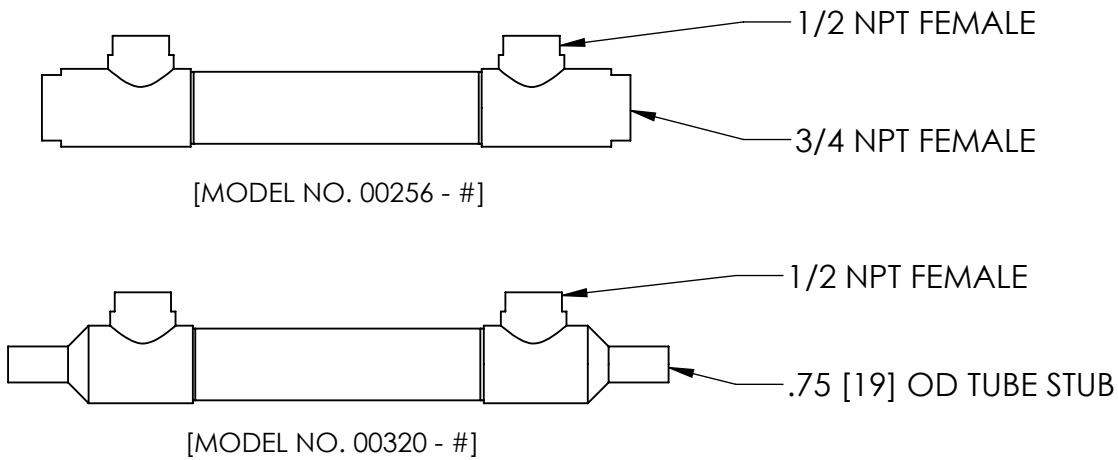
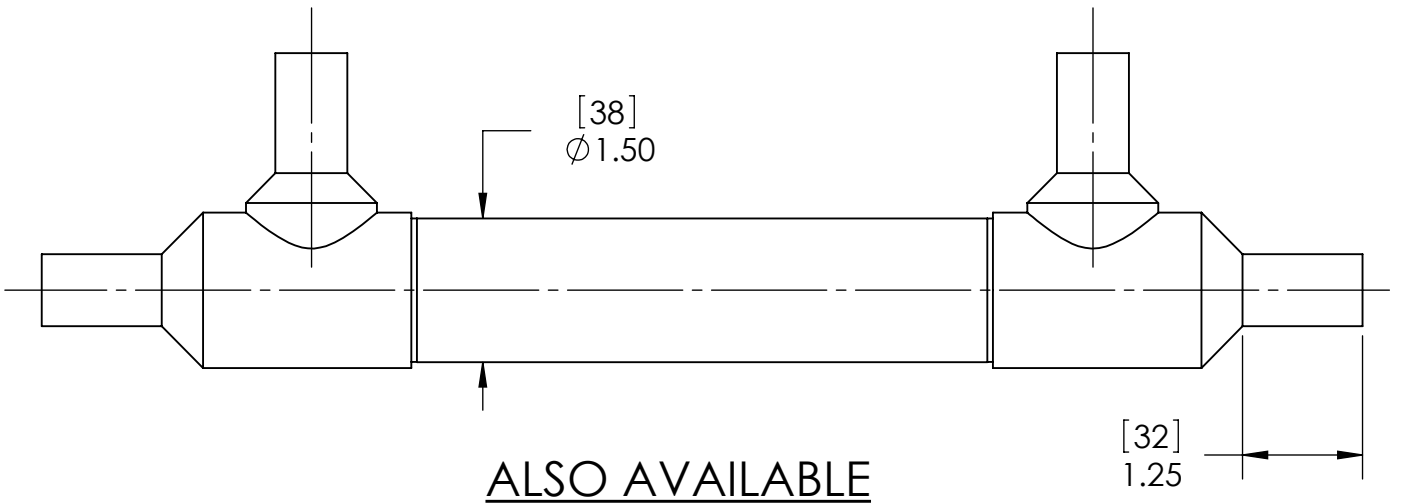
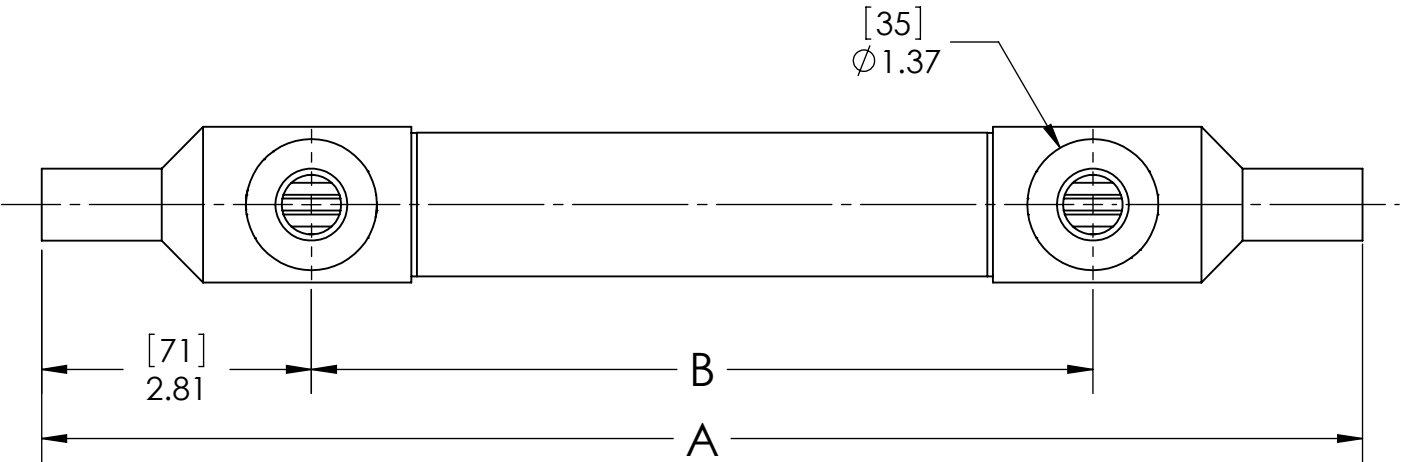
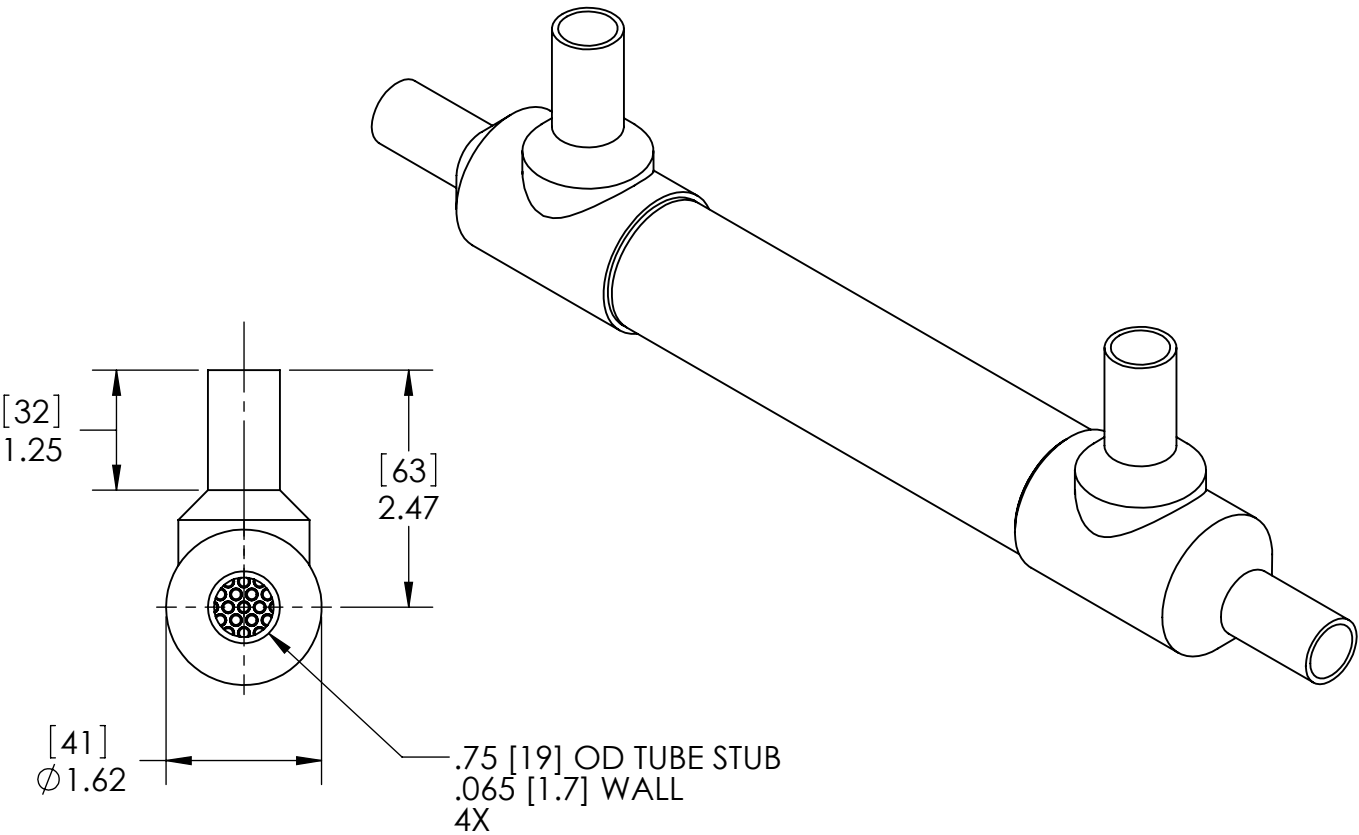


- NOTES:
1. MATERIAL: 316L STAINLESS STEEL, NICKEL BRAZED.
 2. ALL EXTERNAL SURFACES SATIN FINISH.
 3. MAXIMUM OPERATING CONDITIONS:
 - PRESSURE: TUBESIDE - 1,200 psi (83 bar)
SHELLSIDE - 800 psi (55 bar)
 - TEMPERATURE: 800°F (425°C)
 - PRESSURE FOR STEAM SERVICE: 125 psi (8.6 bar)
 - FLUID TEMPERATURE DIFFERENCE:
 $(T_{HOT})_{AVE} - (T_{COLD})_{AVE} \leq 125^{\circ}F (70^{\circ}C)$



- #	TUBE COUNT	TUBE LENGTH		DIM A		DIM B		WEIGHT EMPTY		TRANSFER AREA	
		in	mm	in	mm	in	mm	lb	kg	ft²	m²
- 03	55	20.00	508	23.75	603	18.13	461	4.60	2.09	2.93	0.27
- 05		15.00	381	18.75	476	13.13	334	3.80	1.72	2.18	0.20
- 07		10.00	254	13.75	349	8.13	207	3.10	1.41	1.43	0.13
- 04	91	20.00	508	23.75	603	18.13	461	4.60	2.09	3.65	0.34
- 08		10.00	254	13.75	349	8.13	207	3.10	1.41	1.78	0.17
- 09		15.00	381	18.75	476	13.13	334	3.80	1.72	2.71	0.25
- 12	55	25.00	635	28.75	730	23.13	588	5.47	2.48	3.68	0.34
- 13		30.00	762	33.75	857	28.13	715	6.25	2.83	4.43	0.41
- 14	91	25.00	635	28.75	730	23.13	588	5.47	2.48	4.58	0.43
- 15		30.00	762	33.75	857	28.13	715	6.25	2.83	5.21	0.48
-16	55	40.00	1016	43.75	1111	38.13	969	7.90	3.58	6.00	0.56
-17	91	40.00	1016	43.75	1111	38.13	969	7.86	3.57	7.47	0.69



ALL DIMENSIONS ARE IN INCHES [mm]

PROPRIETARY AND CONFIDENTIAL THE INFORMATION CONTAINED IN THIS DOCUMENT IS THE SOLE PROPERTY OF EXERGY, LLC. ANY REPRODUCTION, DISCLOSURE, OR USE, IN PART OR AS A WHOLE, WITHOUT THE WRITTEN PERMISSION OF EXERGY, LLC IS PROHIBITED.		ExERGY HEAT TRANSFER SOLUTIONS		320 ENDO BLVD. GARDEN CITY, NY 11530 USA (516)832-9300 www.exergyllc.com			
PRODUCT SPECIFICATIONS SUBJECT TO CHANGE WITHOUT NOTICE. MANUFACTURER ASSUMES NO LIABILITY FOR MISUSE OR ABUSE OF PRODUCT. SPECIFIC WARRANTY INFORMATION IS AVAILABLE UPON REQUEST.		SHELL & TUBE HEAT EXCHANGER 35 SERIES TUBE STUB					
THIRD ANGLE PROJECTION		MODEL NO. 00296 - #					
		DATE 10/17/2014	SCALE 1:2	SHEET 1 OF 1			