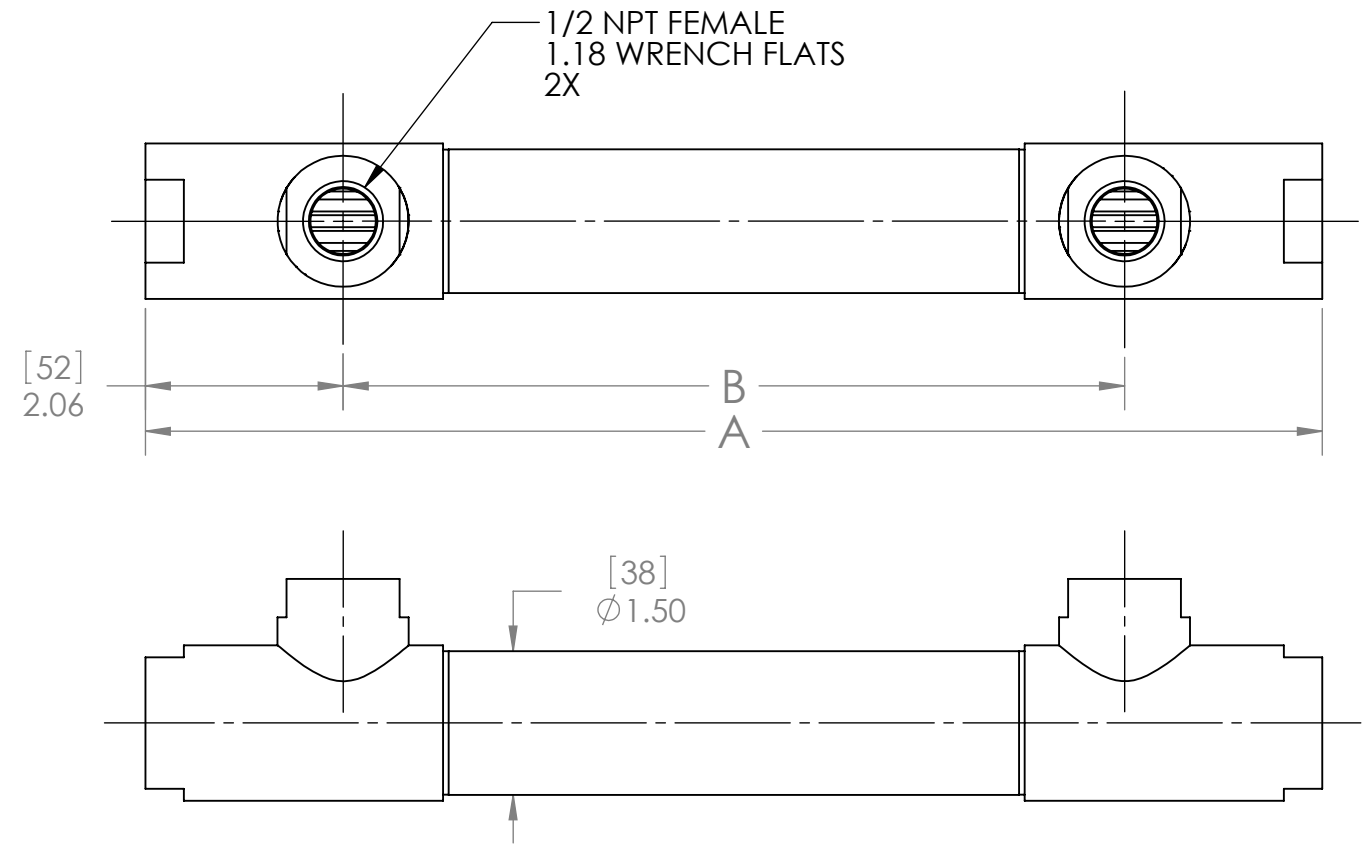
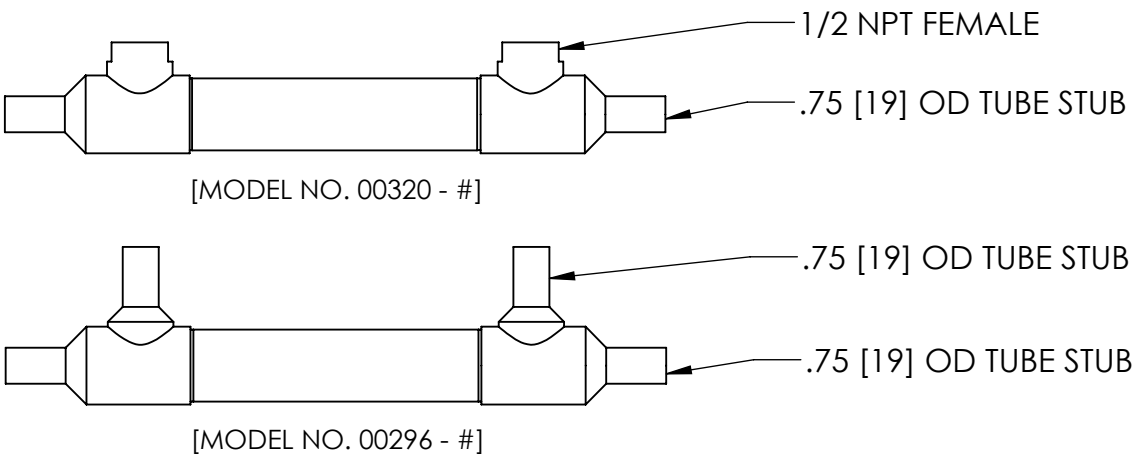


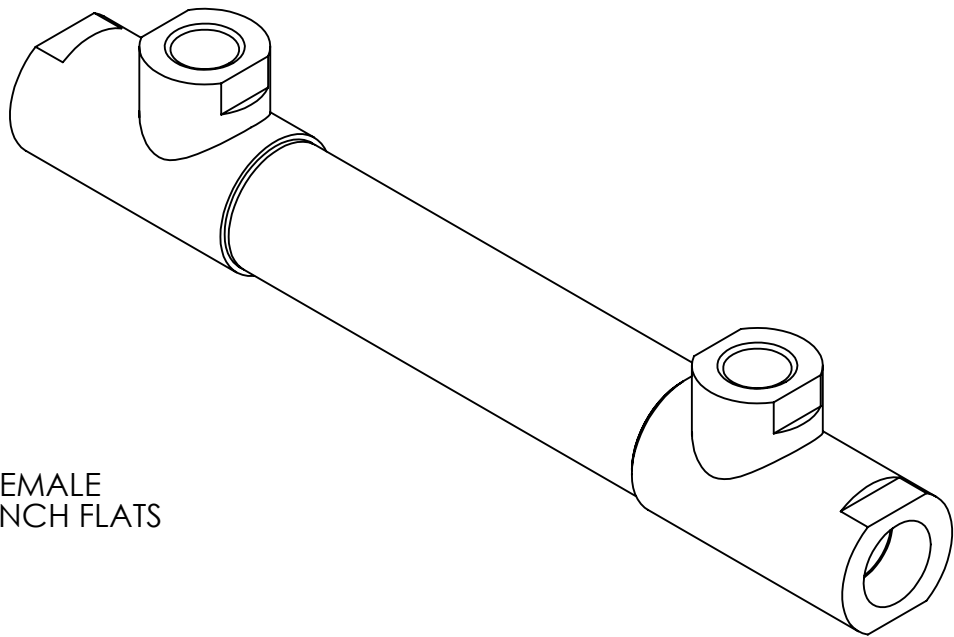
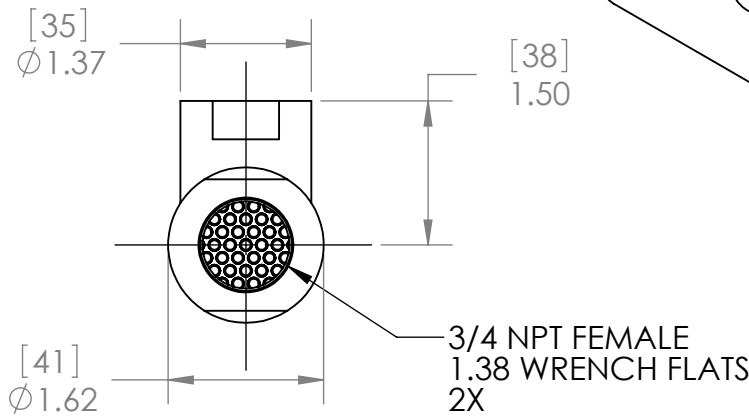
- NOTES:
- 1. MATERIAL: 316L STAINLESS STEEL, NICKEL BRAZED.
 - 2. ALL EXTERNAL SURFACES BUFF POLISH FINISH.
 - 3. MAXIMUM OPERATING CONDITIONS:
 - PRESSURE: TUBESIDE - 1,200 psi (83 bar)
SHELLSIDE - 800 psi (55 bar)
 - TEMPERATURE: 800°F (425°C)
 - PRESSURE FOR STEAM SERVICE: 125 psi (8.6 bar)
 - FLUID TEMPERATURE DIFFERENCE:
 $(T_{HOT})_{AVE} - (T_{COLD})_{AVE} \leq 125^{\circ}F (70^{\circ}C)$



ALSO AVAILABLE



- #	TUBE COUNT	TUBE LENGTH		DIM A		DIM B		WEIGHT EMPTY		TRANSFER AREA	
		in	mm	in	mm	in	mm	lb	kg	ft²	m²
- 01	55	20.00	508	22.25	565	18.13	461	4.60	2.09	2.93	0.27
- 02		10.00	254	12.25	311	8.13	207	3.10	1.41	1.43	0.13
- 03		15.00	381	17.25	438	13.13	334	3.80	1.72	2.18	0.20
- 04	91	10.00	254	12.25	311	8.13	207	3.10	1.41	1.78	0.17
- 05		15.00	381	17.25	438	13.13	334	3.80	1.72	2.71	0.25
- 06		20.00	508	22.25	565	18.13	461	4.60	2.09	3.65	0.34
- 11	55	4.25	108	6.5	165	2.38	60	2.25	1.02	0.71	0.07
- 19		30.00	762	32.25	819	28.13	715	6.25	2.83	4.43	0.41
- 20		10.00	254	12.25	311	8.13	207	4.10	1.86	0.73	0.07
- 21	14	15.00	381	17.25	438	13.13	334	4.60	2.09	1.11	0.10
- 22		20.00	508	22.25	565	18.13	461	5.10	2.31	1.50	0.14
- 24		25.00	635	27.25	692	23.13	588	5.47	2.48	3.68	0.34
- 25	91	25.00	635	27.25	692	23.13	588	5.46	2.48	4.58	0.43
- 26		30.00	762	32.25	819	28.13	715	6.23	2.83	5.51	0.51
- 27		6.00	152	8.25	210	4.13	105	2.52	1.14	0.83	0.08
- 28	91	40.00	1016	42.25	1073	38.13	969	7.86	3.57	7.47	0.69
- 29	55	40.00	1016	42.25	1073	38.13	969	7.90	3.58	6.00	0.56



ALL DIMENSIONS ARE IN INCHES [mm]

PROPRIETARY AND CONFIDENTIAL

THE INFORMATION CONTAINED IN THIS DOCUMENT IS THE SOLE PROPERTY OF EXERGY, LLC. ANY REPRODUCTION, DISCLOSURE, OR USE, IN PART OR AS A WHOLE, WITHOUT THE WRITTEN PERMISSION OF EXERGY, LLC IS PROHIBITED.

PRODUCT SPECIFICATIONS SUBJECT TO CHANGE WITHOUT NOTICE. MANUFACTURER ASSUMES NO LIABILITY FOR MISUSE OR ABUSE OF PRODUCT. SPECIFIC WARRANTY INFORMATION IS AVAILABLE UPON REQUEST.

THIRD ANGLE PROJECTION

ExERGY
HEAT TRANSFER SOLUTIONS

320 ENDO BLVD.
GARDEN CITY, NY 11530
USA (516)832-9300
www.exergyllc.com

SHELL & TUBE HEAT EXCHANGER
35 SERIES
3/4 NPT

MODEL NO. **00256 - #**

DATE **3/19/2018** SCALE **1:2** SHEET **1 OF 1**